



XUERONG WANG

WorkSample

2015 - 2021

Work Practices

4 Projects

3 Facade Studies

2 Researches

1 Publication

P ractices

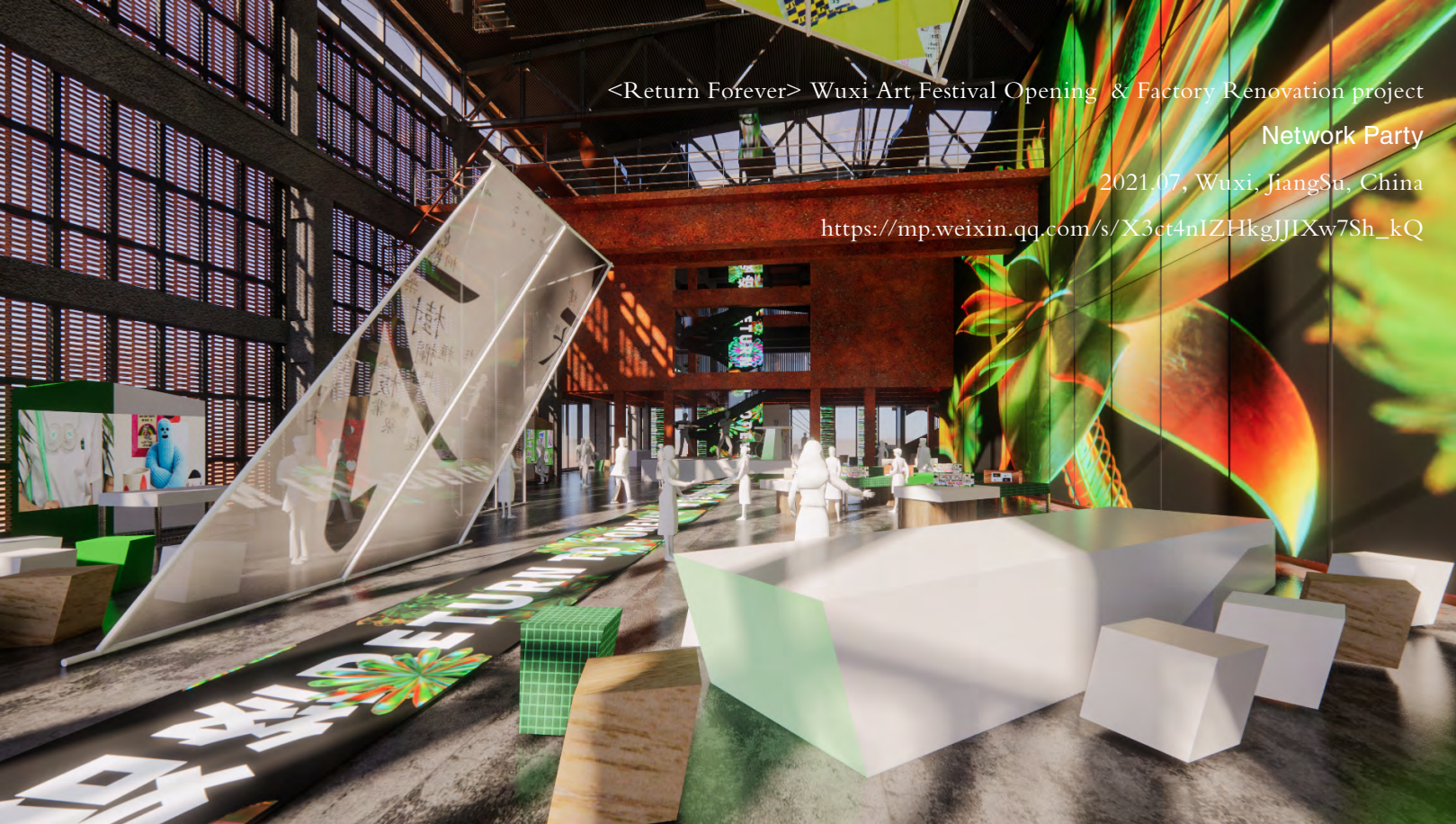
S-elected

W-orks

F-rom

W-ork

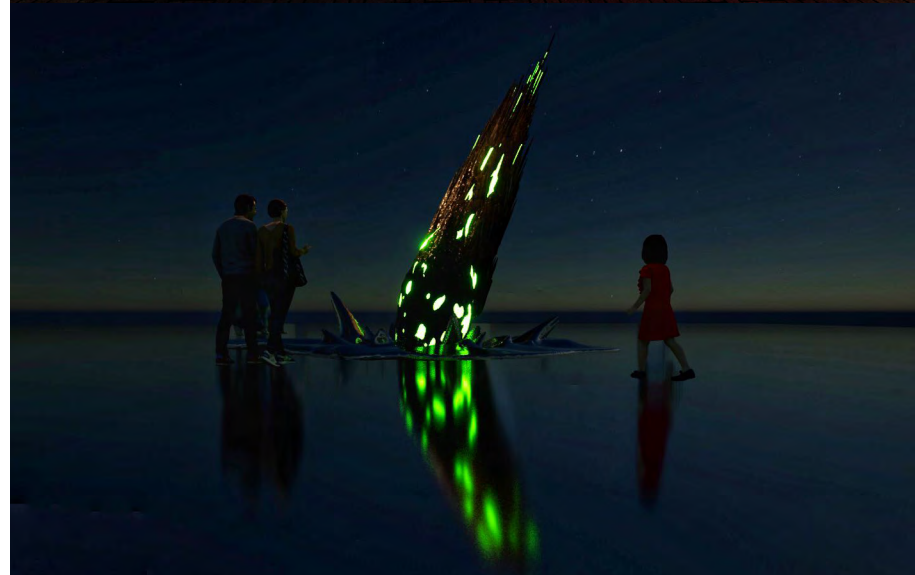
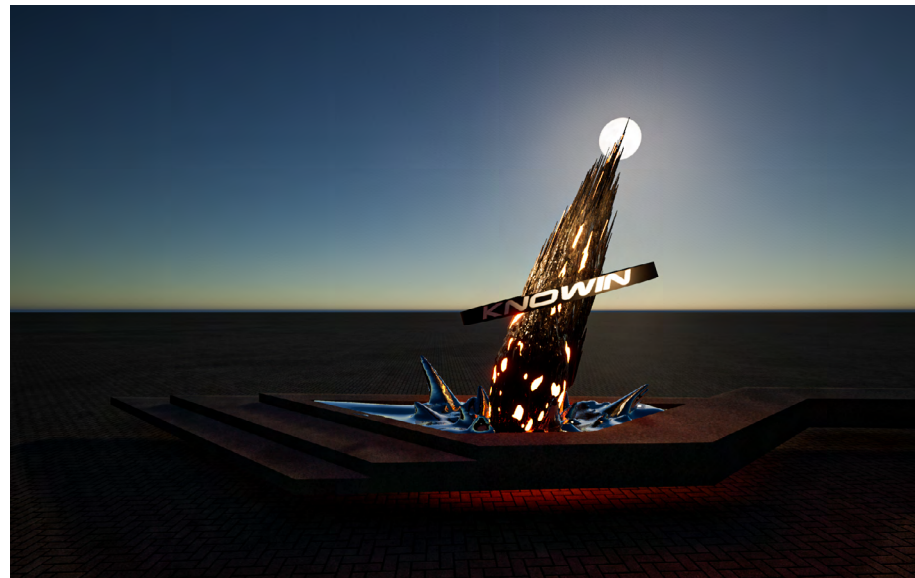
<Return Forever> Wuxi Art Festival Opening & Factory Renovation project
Network Party
2021.07, Wuxi, JiangSu, China
https://mp.weixin.qq.com/s/X3ct4nIZHkgJJIXw7Sh_kQ



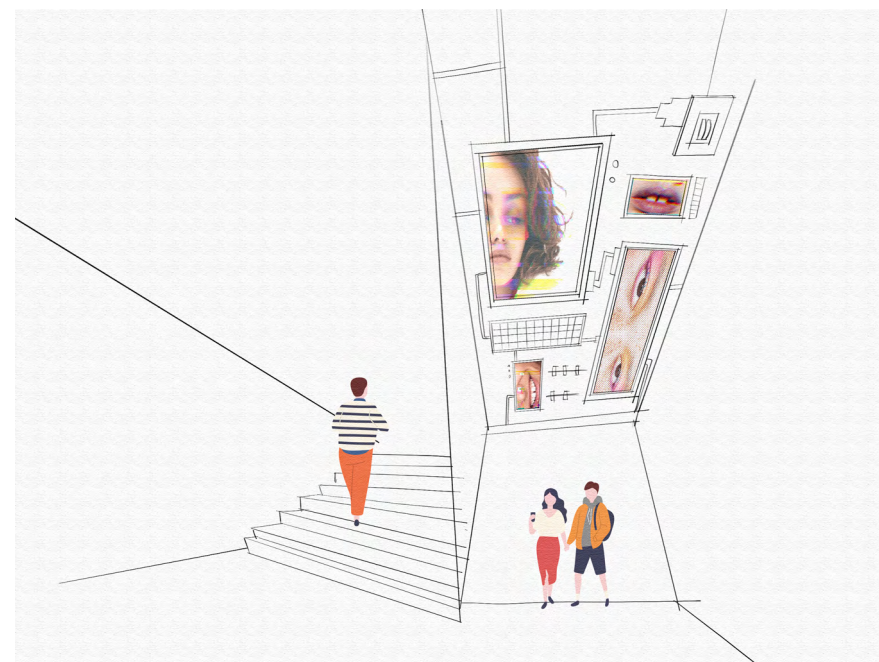
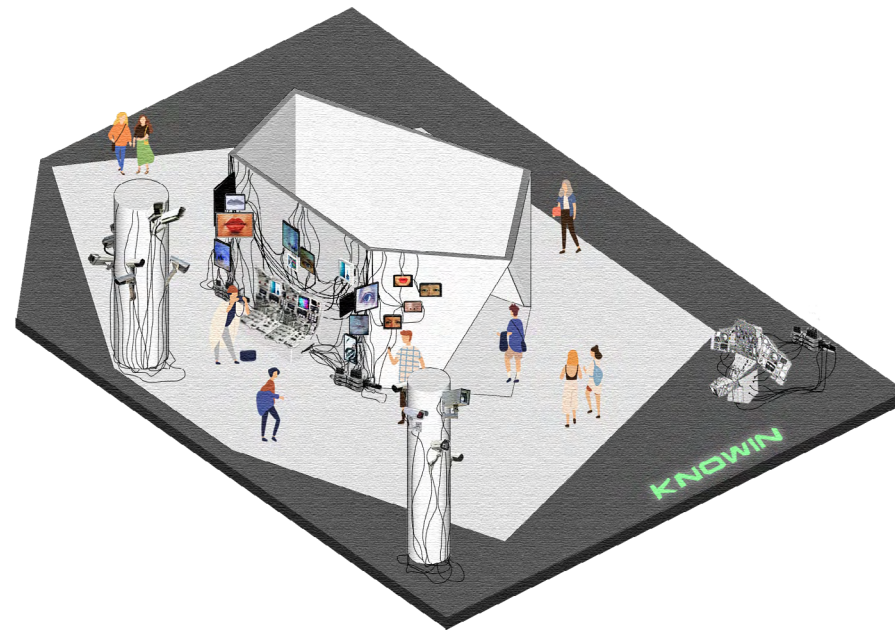
Render, Digital modeling
Sketchup & Enscape

Photos at Scene
Through 7.9-12





<The Meteorolite>
Hudini & Rhino & Twinmotion
Installation Scheme for store Knowin
Chengdu, Sichuan, China



Sketchup & PS
Installation Scheme for store Knowin
Chengdu, Sichuan, China



<The Whale>
Rhino & Twinmotion
Child Playground (under construction)
Beijing, China

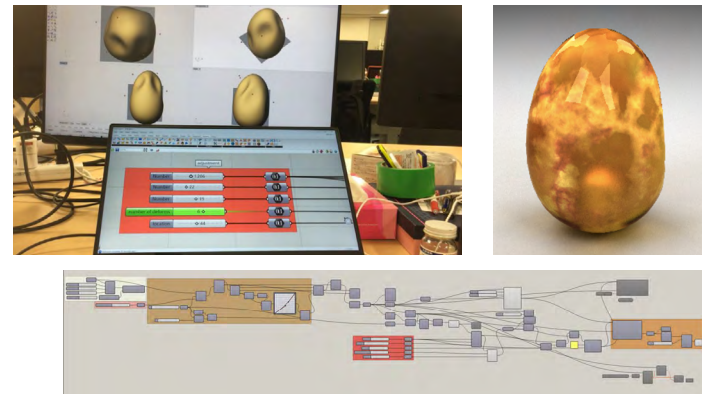
<Autonomous Resonating Life – Liquefied Light Color, Sunrise and Sunset>
teamLab
 2020.8.1 – Permanent, Musashino, Japan
<https://art.team-lab.cn/e/acornforest/>



< Digitized Forest at the World Heritage Site of Shimogamo Shrine >
teamLab
 2019.8.17 – 9.02, Kyoto, Japan
<https://art.team-lab.cn/e/shimogamo/>



Project: < Resonating Forest and Autonomous Resonating Life>
 On field setup



Prototype, digital modeling
 Rhino & Grasshopper

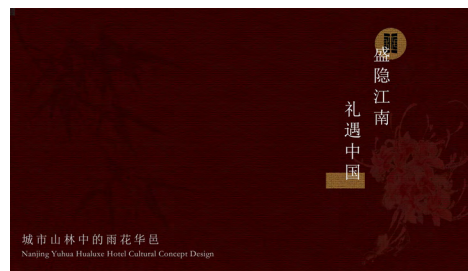


Project: <Walk, Walk, Walk>
 On field setup

<Lifestyle SPACE> Nanjing EXPO Center Street Renovation Project

Attention

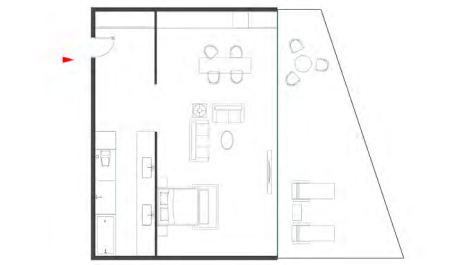
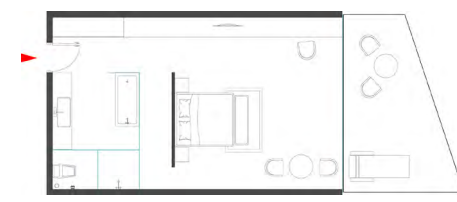
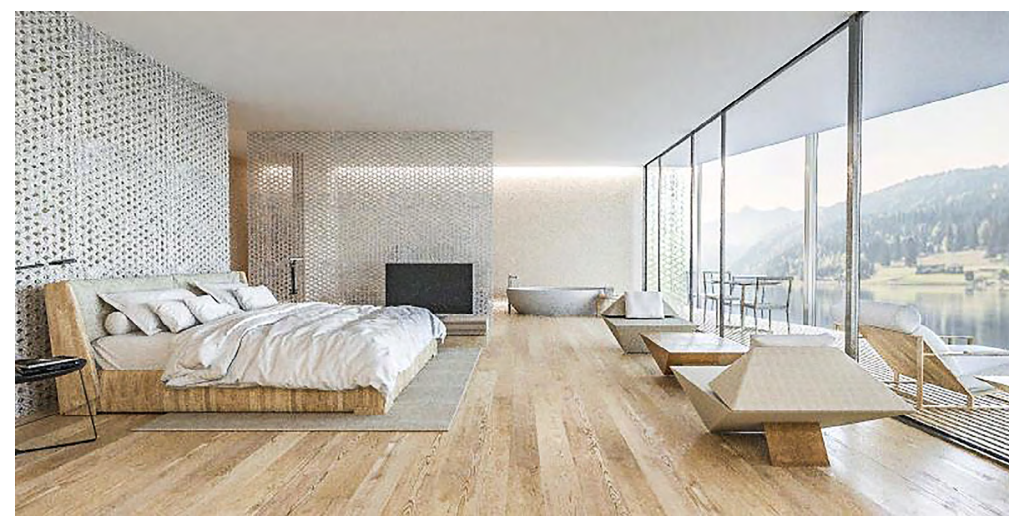
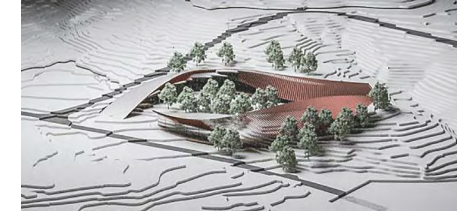
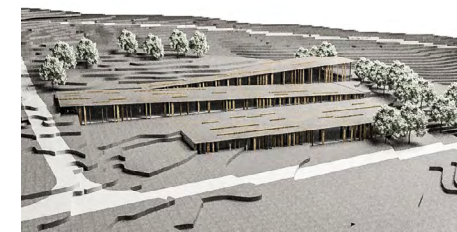
2020.12, Nanjing, JiangSu



<Zangma Mt. International Resort>

KKAA

2018 till now, Tokyo, Japan



4 Projects

P-layful

R-eversal

I-nhabitant

S-entimental

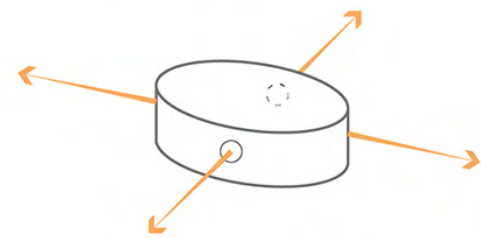
[Playful]

Montessori School

Florence, Italy

Instructor: Robert McCarter

The program involves the design of a small Montessori School sited adjacent to the Amerigo Vespucci Bridge over the River Arno. The bridge connects two very different neighborhoods in the center of Florence. The neighborhood on the north side of the Arno River, is considered an upper class neighborhood; In contrast, San Frediano on the River, is a working class neighborhood of numerous apartments, factories and workshops, with a larger population of families. The Montessori School acts to connect—as an inhabited axis communis—these two disparate neighborhoods of Florence. The design engages the fundamentally spatial and experiential definition of the Montessori education of “learning through making.” Students deploy the programmatic elements of the Montessori School to construct a “society of spaces” as an inhabited surface, allowing a re-conceptualization of the nature of the ground plane as situated above and alongside the River Arno. Under the theme “Playful Space”, I created a series of fun experiential spaces, both exterior and interior, from building structure to retails, for students to release their nature, invoke their potentials, and enjoy their vitality and youth.



Observe Florence



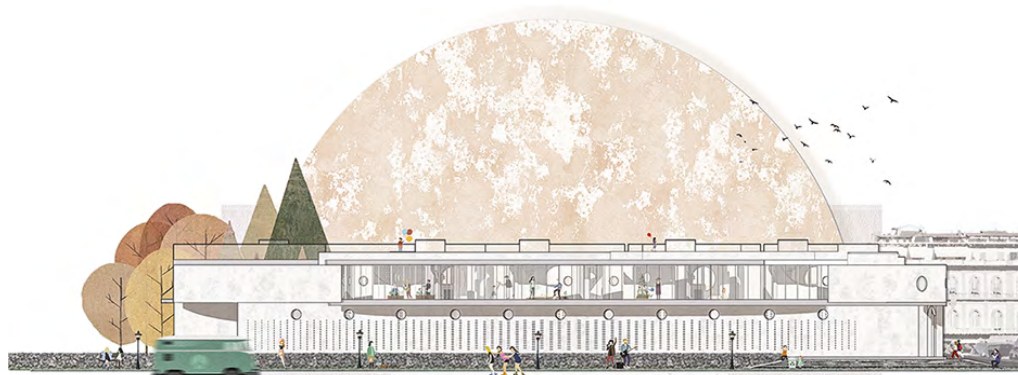
Learning by Making

Amerigo Vespucci Bridge



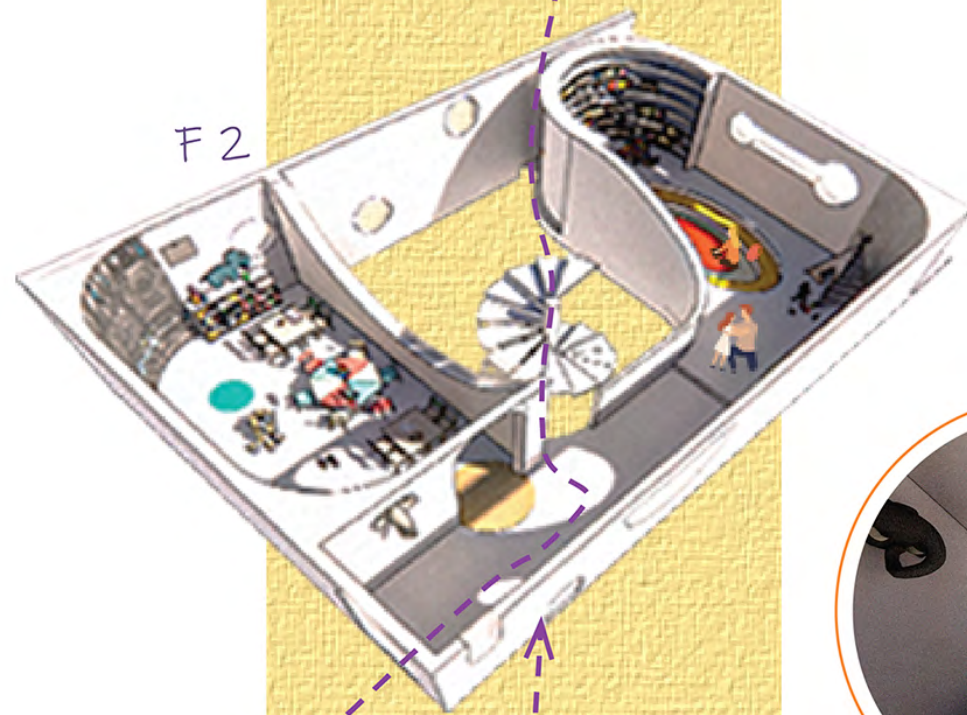
"Learning by doing it oneself, learning that is self-chosen and founded upon individual inte [leads to] the development of a complete human being, oriented to the environment, and ad to his or her time, place and culture."

<Montessori School>
Model Photo



<Montessori School Elevation>
Rhino, Photoshop

F2



Reading in a beautiful afternoon at the quietest corner of the classroom is definitely a joyful moment of the day.

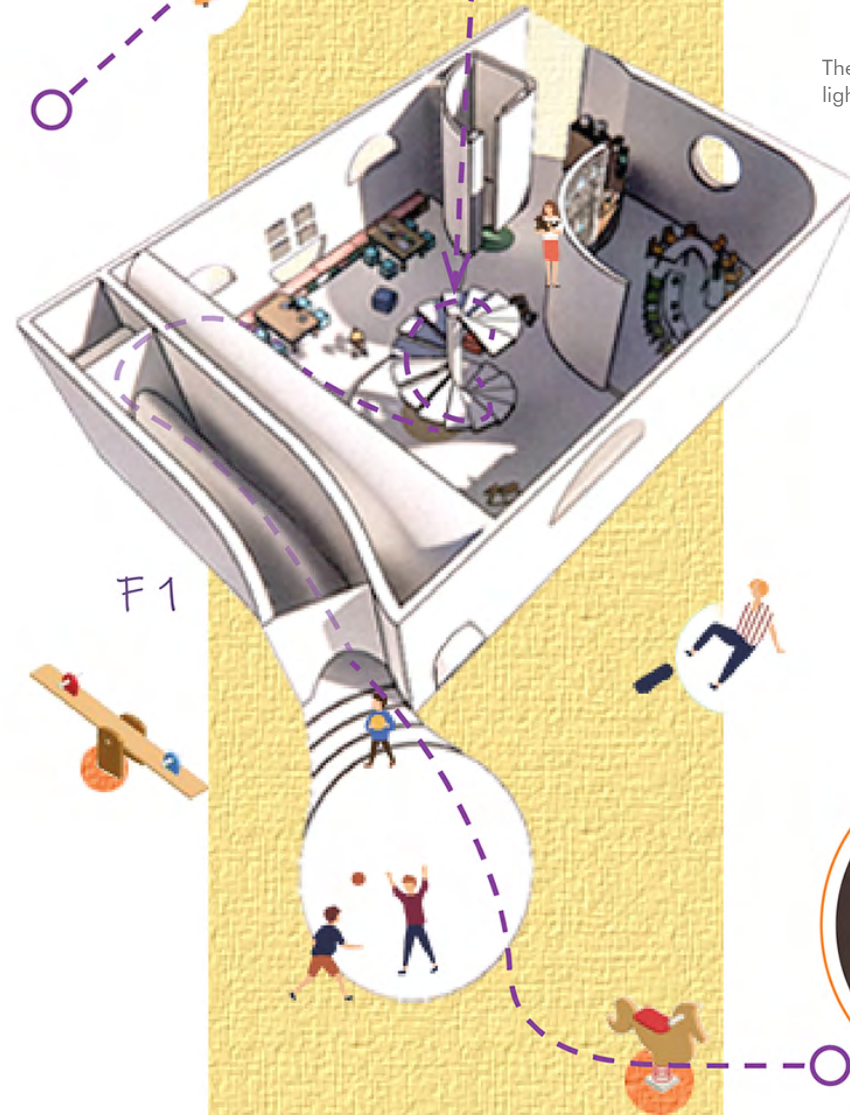


The light sneaks in through the circling windows, lighting up the long hall and entertain the kids.

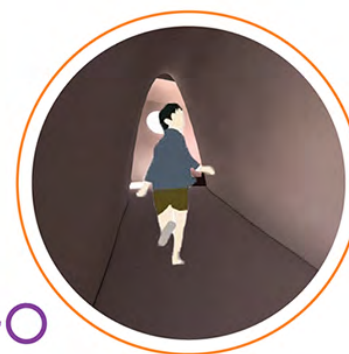


A classroom with instructing tools provides the kids a gathering place for collabrative projects.

F1



The first floor is fully open without segregation. Kids play, study, and take care of each other. They explore the space and themselves, gradually developing to a complete human being.



The entrance is a tunnel. The school begins a new adventure.



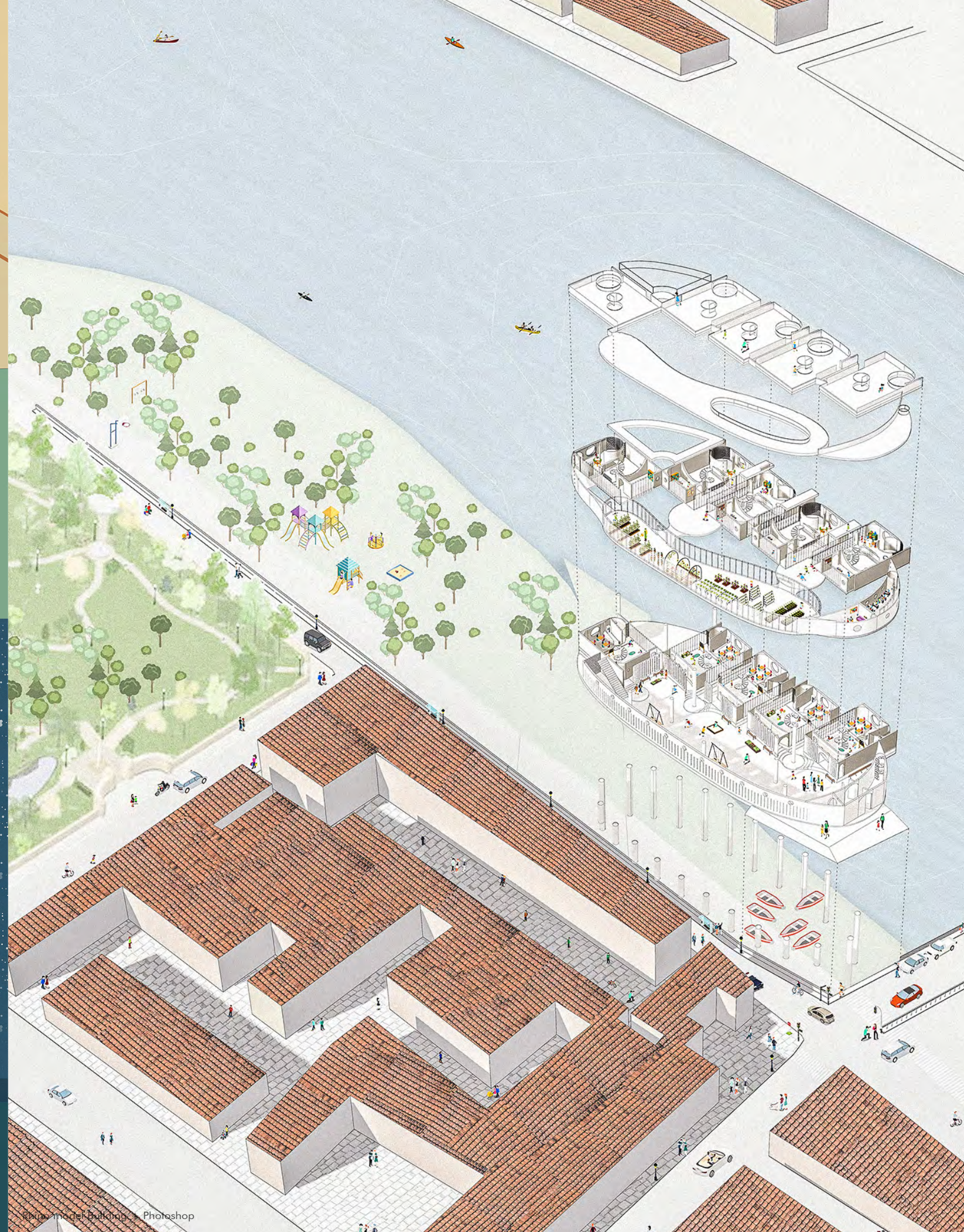
Curves soften the space and increase sense of connection.
 One brings to another.
 The entire space becomes a hide-and-see playground.
 Kids are freely doing whatever they want.
 Organic interactions are born among kids, between kids
 and their surroundings.

<Section Drawing>
 Rhino model
 Photoshop rendering



Large circling windows bring in beautiful sunlight and at the same time bring the kids out from their classrooms to the surroundings: running people, glowing river, and varying classes. Kids, sitting behind the glasses, become the most honest observers of their city Florence. Glancing from north to south, they could then catch Florence's past and present.

<Section Drawing >
 Rhino model
 Photoshop rendering



Rhino model Building Photoshop

[Reversal]

Watershed Complex

Phnom Penh, Cambodia

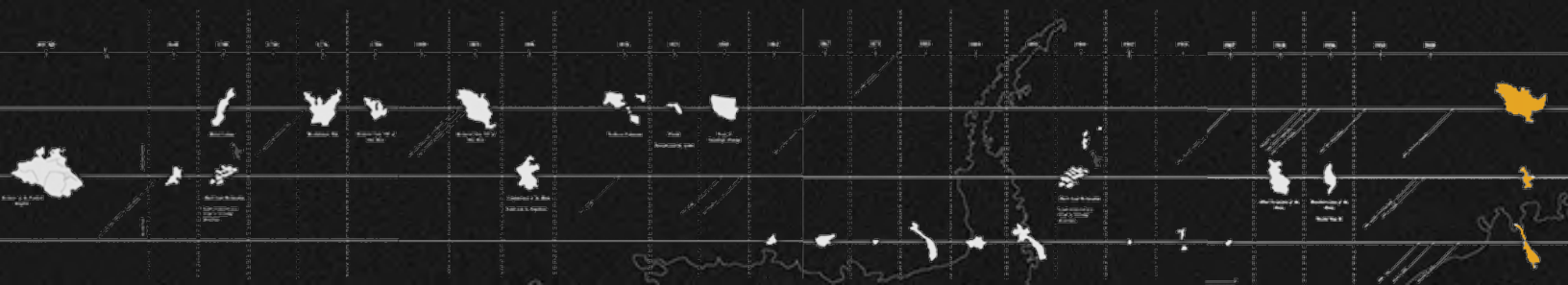
Instructor: Derek Hoferlin

Starting with the prefix "trans", which provides a lens for which to analyze and understand watershed issues of the past, present and future whether political, geographical, economic, or social, we exist and operate in a global age of boundaries. Water transverses through lands, challenging the very boundaries that we create to control it. To examine how water has shaped the way people live, I have chosen to focus our study on the largest river basins in Asia --- the Great Mekong. The watershed design aimed to present a proposal of better living for the people whose whole lives rely on water. China's dam construction on the Upper Mekong triggered disasters, especially along the Thai-Lao border where communities have suffered declining fisheries and changing water levels that have seriously affected their livelihoods. My design functions as an experimental watershed architecture, locating at places which meet the most water-related problems, to offer micro-solutions of farming, fishing, transportation, entertaining, tourism, and fundamentally, to improve natives life quality. This one specifically locates at Phnom Penh, Cambodia. Under the hope of mass-production and widely in use, the complex will eventually fuse into local environment and become parts of their living space.



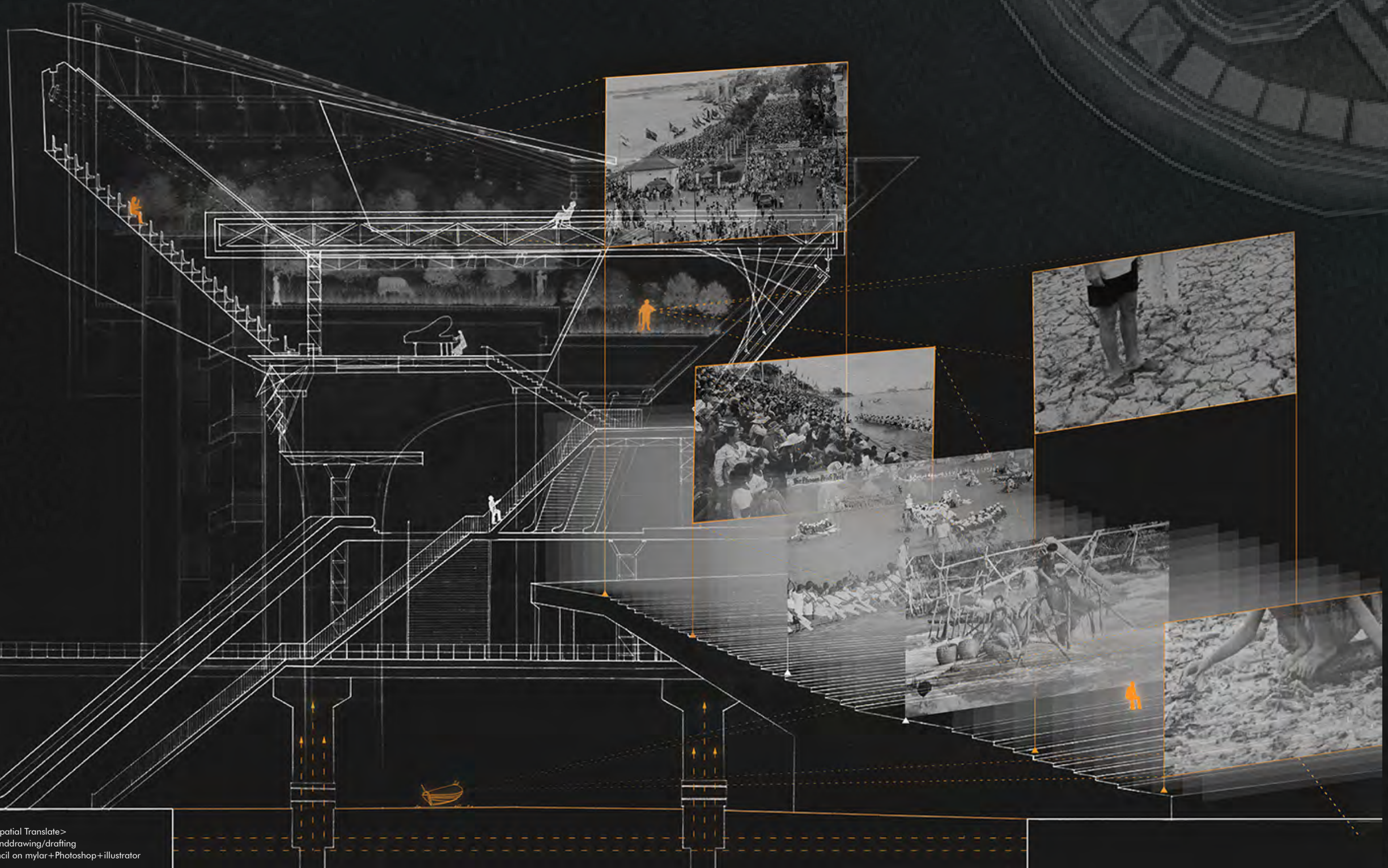
Device - "Reversal"

The model simulates the process of environmental problems coming down from the upper dams to lower basin all the way to the delta. Plus, it also proposes a future that the downstream environmental problems will eventually trouble back to the upper, and downstream countries will take actions to rebel before things get invocatable.



Phnom Penh, Sisowath Quay

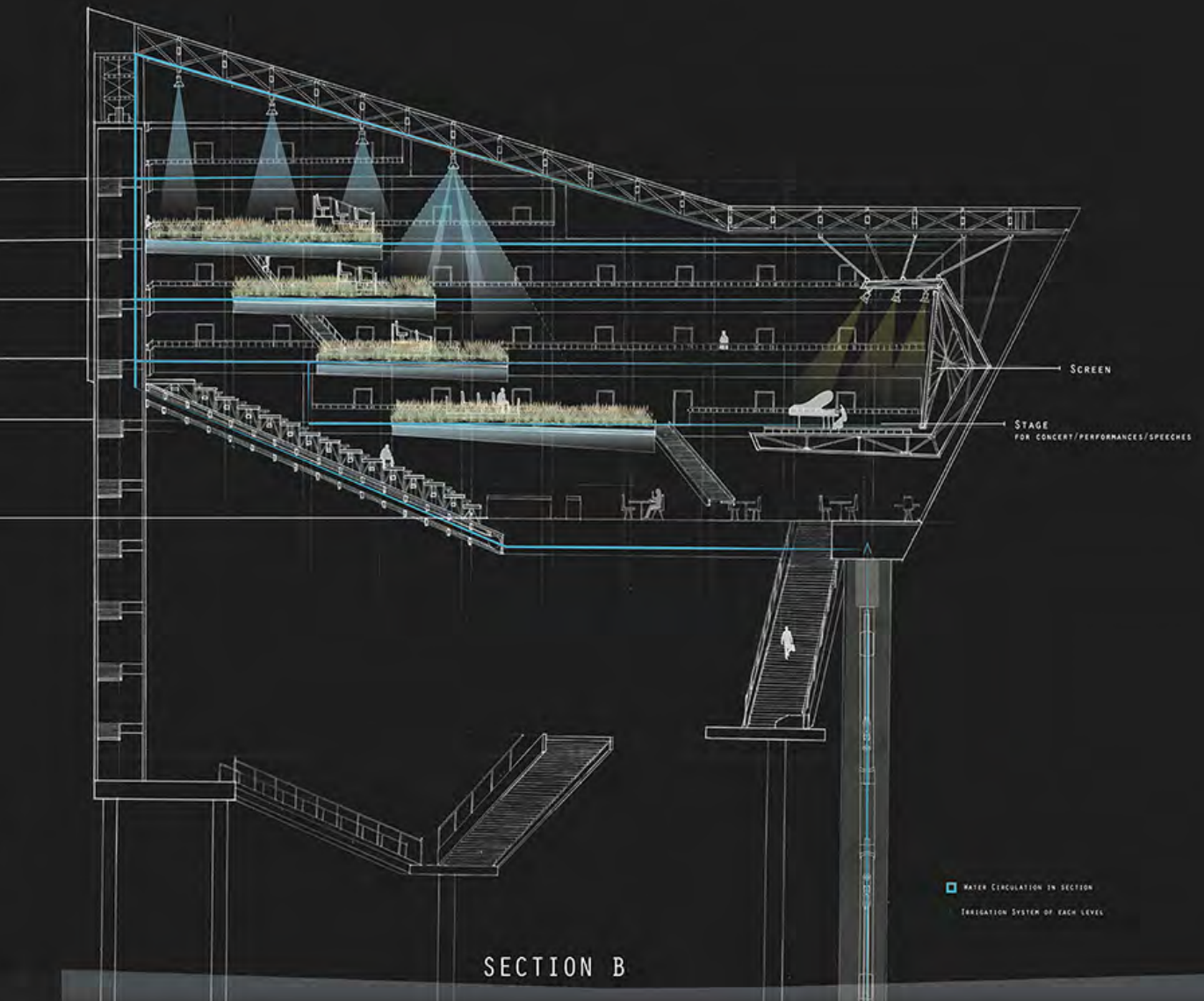
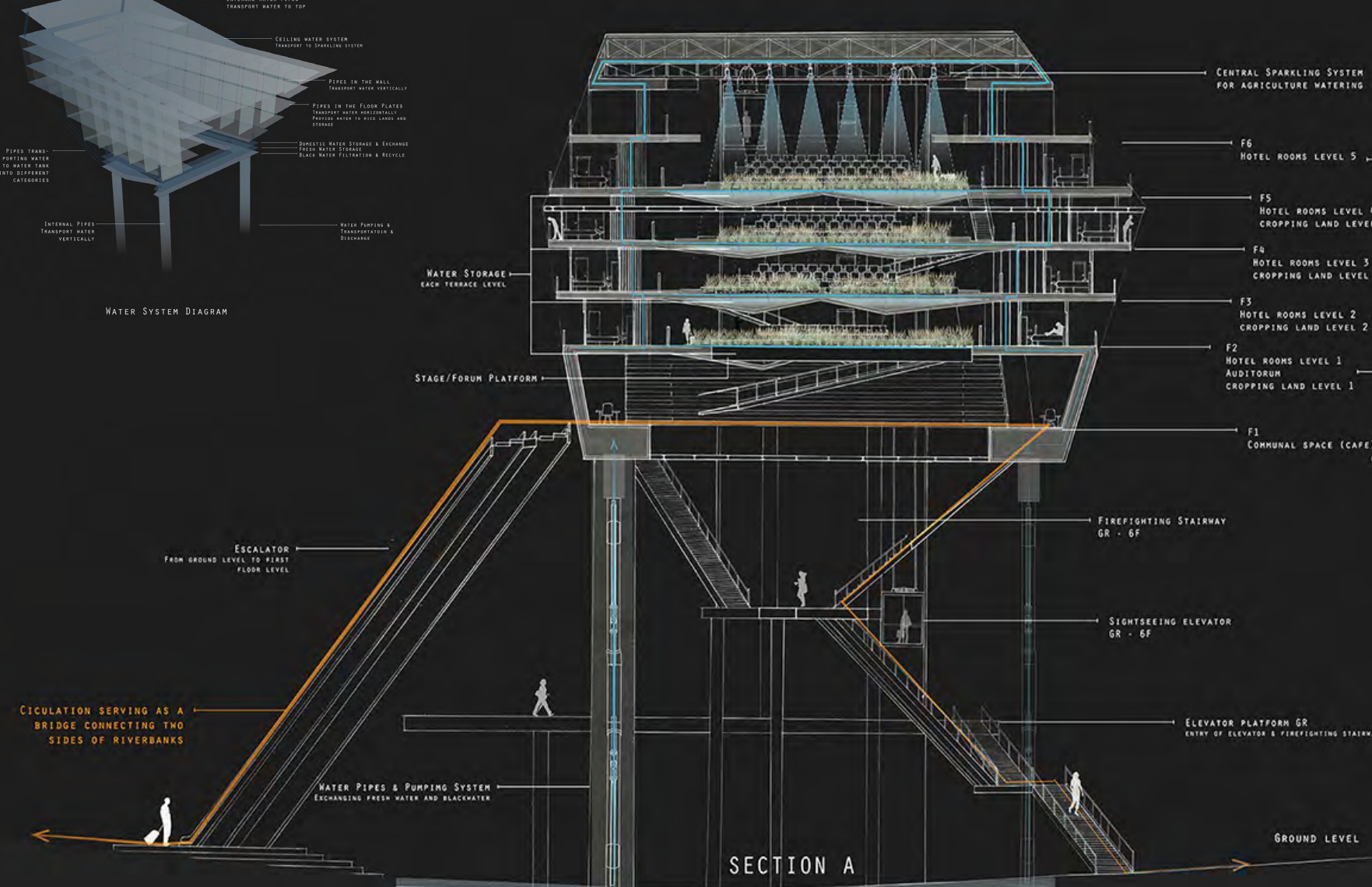
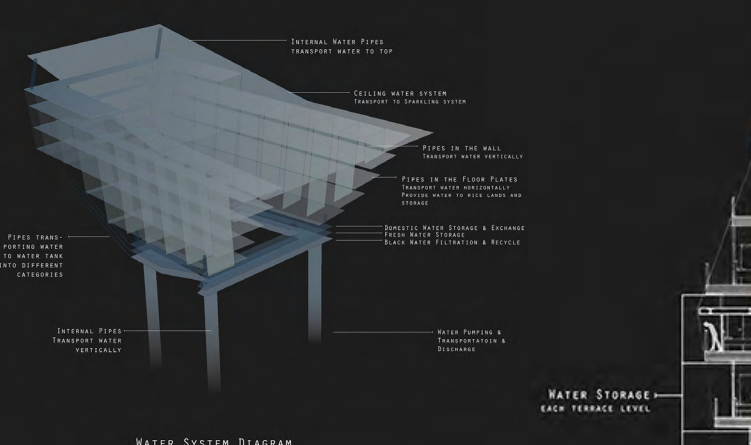
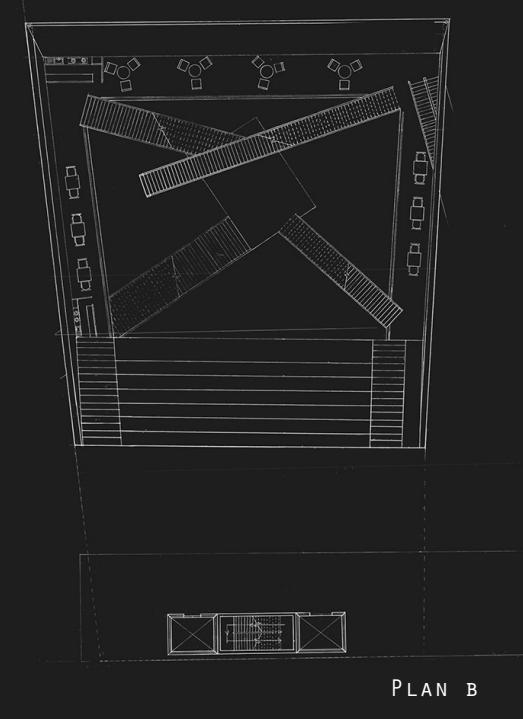
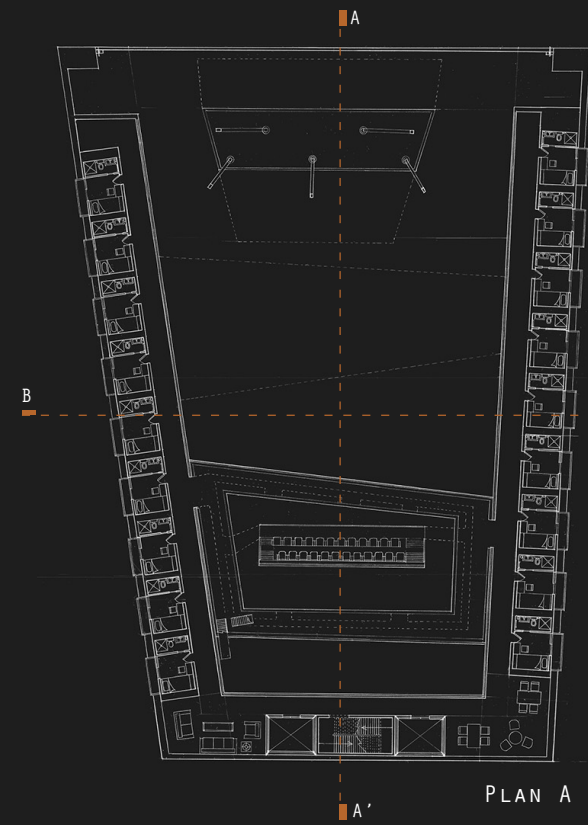
Observe --- Every year there is an important river festival held here in this confluence. The festival marks a reversal of the flow between the Mekong and Tonle Sap rivers. Essentially, the festival is a time to give thanks to the rivers as they provide the region with fertile farming land and plenty of fish. The festival is focused on boat races and concerts which attracts tons of people coming to celebrate, not just natives but also tourists. Hence the complex will also function as a raised observatory platform where everyone could enjoy the races.



Adapt --- Salinity has long-term been a huge problem in the Delta area. It highly jeopardizes local farming and deprive lots of fresh water. Natives have been suffering constantly from severe flooding and shortage of fresh water and food. Such environmental disasters also lead to enormous decline on crop production, resulting in huge decrease in family income. The proposal is aimed to provide local farmers more lands by exploring upper space, lifting everything to the air. People and lands will be distant from the surrounding waters, away from flooding and salinity, offering more free space for farmers to grow trees or other economic crops.



The complex functions as hotel, theatre, farming lands, observatory, fresh water storages, bridge, cafe, lounge and landmark, in order to provide fully-equipped community for locals to enjoy their life as well as provide solutions to existing problems. It is an intrinsic space where desires are developed, an organised module where hamony is created, and an extensive space where people can improvise. It is a space for the community, made by the community and to be reinvented by the community.





4F



2-3F



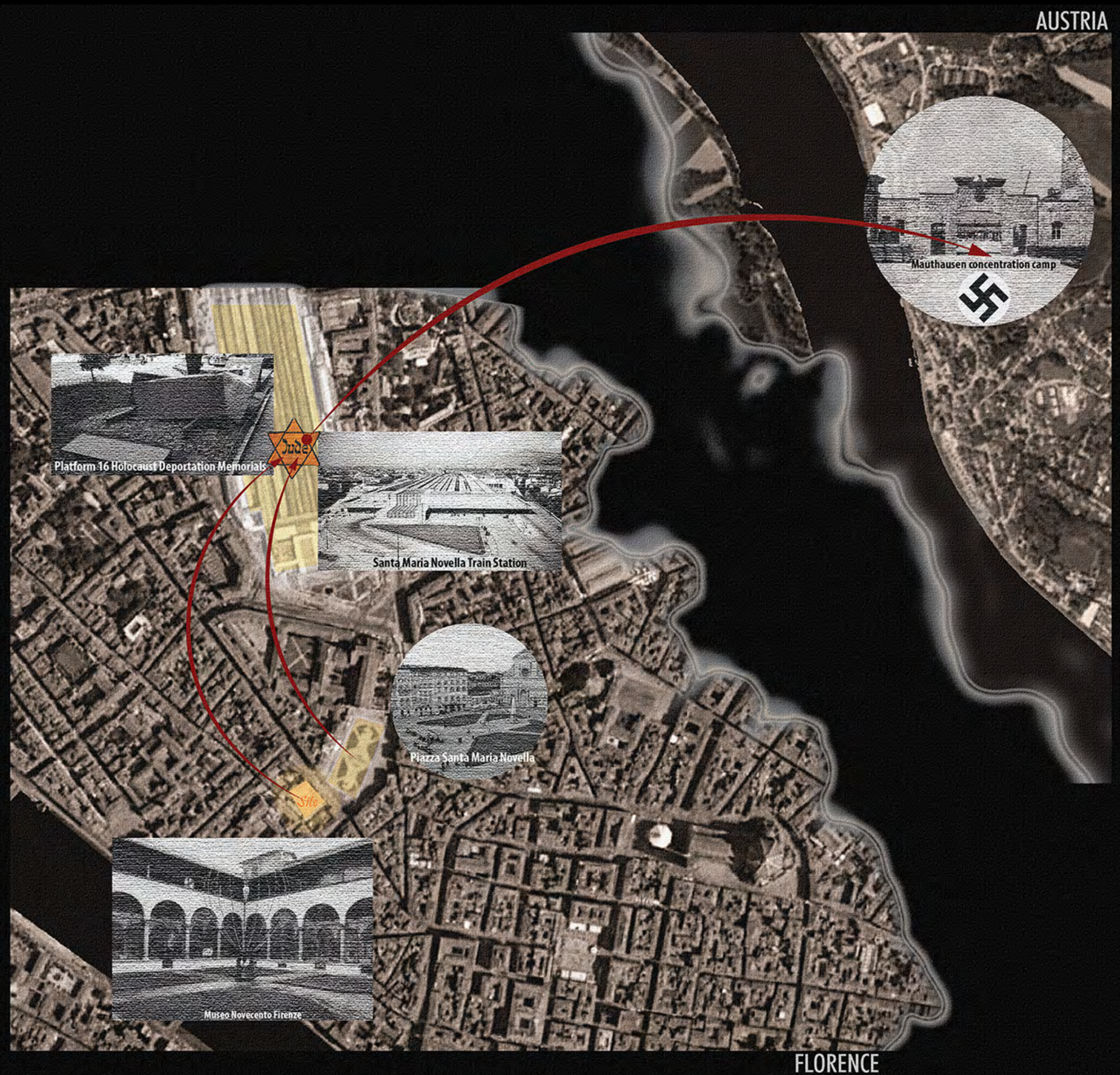
[Sentimental]

Holocaust Memorial
 Florence, Italy
 Instructor: Stephen Leet

In this semester long program in Florence, Italy, we have created proposals for Holocaust Memorials. We determined the content of our memorial design --- as one dedicated to the circumstances of the March 1944 arrests and deportations in Florence; as a memorial to Jewish victims of the Shoah in Italy; or as a memorial to all Holocaust victims.

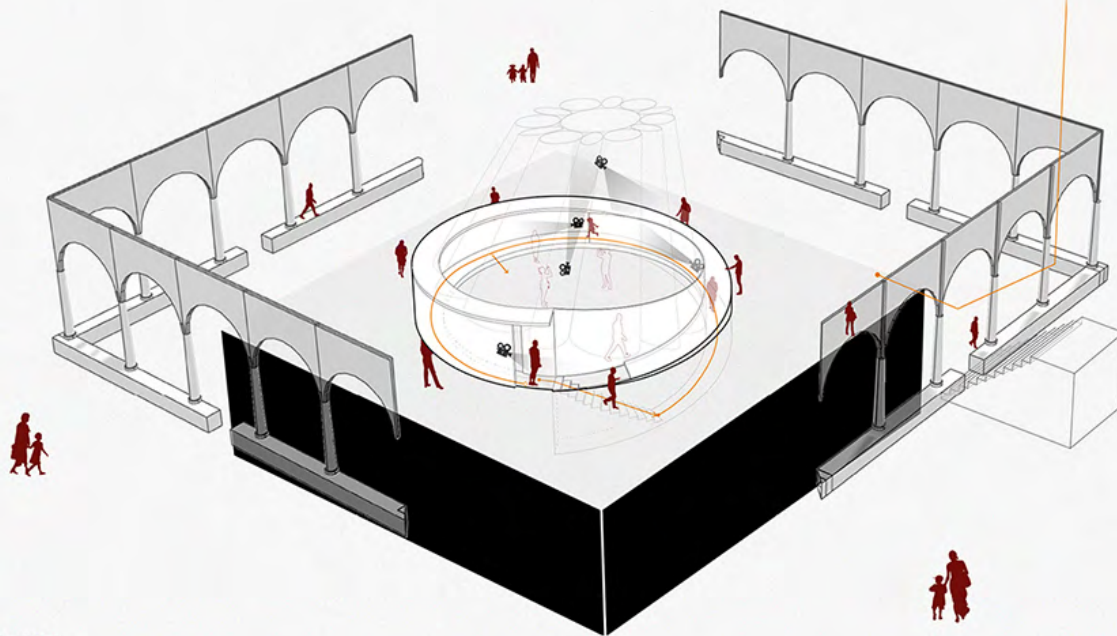
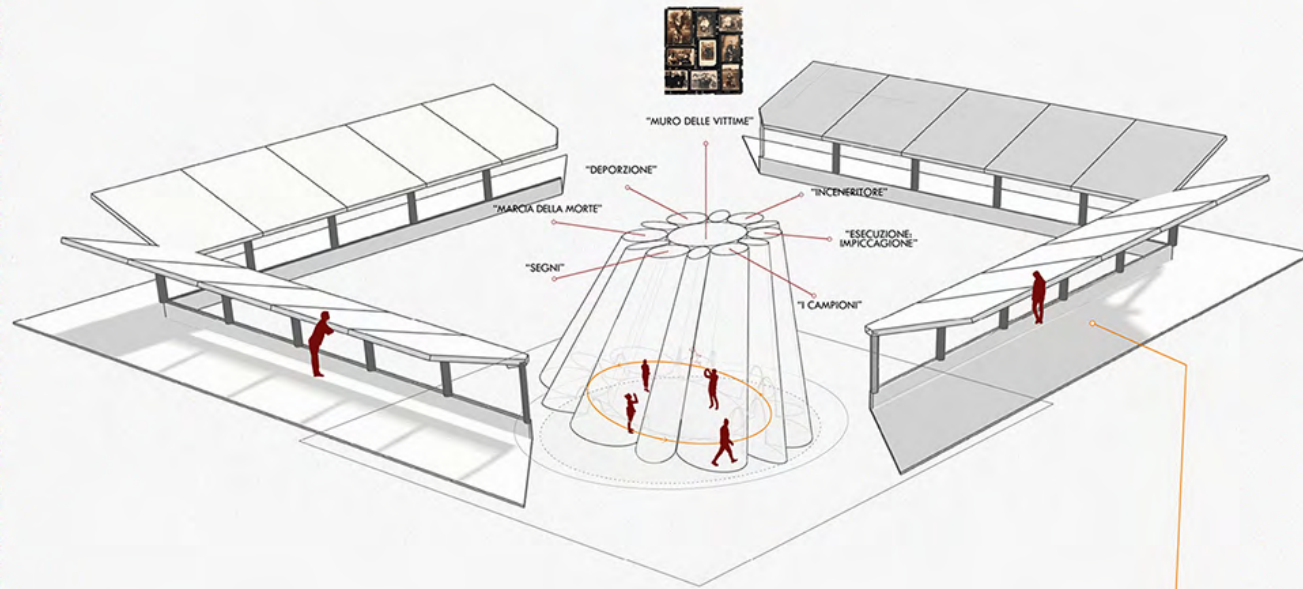
Holocaust in Italy was quite unique. While there were numerous examples of heroic individual efforts in Italy to protect Jews from arrest and deportation, there was also indifference to the demonization of Jews and complicity in their repression, arrests, and ultimately, their genocide. Italian laws sanctioned increasingly severe restrictions on Italian Jews, and set the stage for the genocide that followed. The role of history and memory, and our responsibility today to be alert to racism and the manipulation of fear and facts are connected.

My memorial design was born under the aim of revealing and reminding people of this historical truth and provide an atmospheric space for people to reflect, to understand, and to better move towards the future. It is a museum not just for people to visit and forget, but to memorize and bring on to next generation.



<Axon Drawing & Diagram>
Rhino, Ai

"SOTTO LE MINACCE"



■ CIRCOLAZIONE
📷 RENDER CAMERA

Experience varies at every part of the Museum.
But the sentimental ambience is the same everywhere.
This museum means differently to each individual.
But at least no one will ever forget this valuable part of history.



<Detailed rendering>
Rhino, Vray, Photoshop

Chronology Carved Exterior:

CHRONOLOGY OF ANTISEMITIC LAW 1930-45

THE PERSECUTION OF THE JEWS BEGAN SYSTEMATICALLY ALMOST AS SOON AS HITLER CAME TO POWER. THE NAZIS ESTABLISHED MANY NEW ANTI-JEWISH LAWS. ORIGINALLY THE LAW SEEMED TO FORCE JEWS OUT OF COUNTRY BUT THIS EVENTUALLY LED TO A PLAN TO EXTERMINATE THE JEWS.

1945: MARCH: THE JEWISH BRIGADE UNDER THE COMMAND OF GENERAL ERNEST BENJAMIN, GOES INTO ACTION IN NORTH ITALY AS PART OF THE BRITISH EIGHTH ARMY. APRIL: BENITO MUSSOLINI IS CAUGHT AND KILLED BY ITALIAN PARTISANS; HITLER COMMITTS SUICIDE. AUGUST: IT IS ESTIMATED THAT 7,500 ITALIAN JEWS WERE VICTIMS OF THE HOLOCAUST.

1943: THE 18 POINTS OF VERONA: THE ATTITUDE OF THE ITALIAN FASCISTS TOWARDS ITALIAN JEWS CHANGED DRASTICALLY IN NOVEMBER 1943, AFTER THE FASCIST AUTHORITIES DECLARED THEM TO BE OF "ENEMY NATIONALITY" DURING THE CONGRESS OF VERONA AND BEGAN TO PARTICIPATE ACTIVELY IN THE PROSECUTION AND ARREST OF JEWS.

1940: POPE PIUS XII IS AWARE OF THE HOLOCAUST, BUT FAILS TO SPEAK OUT AGAINST IT.

1938: THE LAW 7.114 MANIFESTO OF RACE - BENITO MUSSOLINI ISSUED - VICTOR EMMANUEL III SIGNED OFF FASCIST GRAND COUNCIL ADOPTS THE ANTI-SEMITIC LEGISLATION 11.18 ITALIAN RACIAL LAWS WERE PASSED ON.

1937: POPE PIUS XI ISSUES AND ENCYCLICAL, "WITH BURNING ANXIETY," WHICH REFLECTS THE RACE-CONSCIOUS MYTHS OF "RACE AND BLOOD" AS CONTRARY TO CHRISTIAN TRUTH, BUT DID NOT MENTION, NOR DIRECTLY CRITICIZE.

1936: JEWISH STUDENTS EXCLUDED FROM EXAMS IN MEDICINE, DENTISTRY, PHARMACY AND LAW. JEWS EXCLUDED FROM MILITARY SERVICE. PASSPORTS FOR JEWS TO TRAVEL ABROAD RESTRICTED.

1934: POLICE AND THE COURTS NO LONGER PROTECT JEWS. APRIL BOYCOTTS OF JEWISH SHOPS.

1933: PUBLIC BURNING OF BOOKS BY JEWS AND ANTI-NAZIS. RANDOM ATTACKS ON JEWS AND JEWISH PROPERTY.

1932: STATUTE OF THE FASCIST NATIONAL PARTY.

1930: ITALY ENACTS A LAW STANDARDIZING THE LEGAL STATUS OF ITALIAN JEWISH COMMUNITIES.

Holocaust Incidents Carved inside the tube:

- 1 ARDEATINE MASSACRE IN ROME, 1944.3**
SS Police Regiment Bozen Reprisal on partisan attack. 4 prisoners sentenced to death + 17 serving long sentences + 167 deemed "worthy of death" + 2-4 civilians rounded up + 57 Jews in Nazi custody + some Italians from Regina Coeli prison = 330 + 5 "by mistake" = 335. The bodies of the victims were placed in piles, and then buried under tons of rock debris.
- 2 FLORENCE HOLOCAUST DEPORTATION, 1944.3**
on platform 16, santa maria novella station, Jewish people and other Italian citizens that were transported to Nazi concentration camps. 338 men were escorted to Santa Maria Novella station and deported to extermination camps in Germany, mainly to Mauthausen. Only 64 of them, 19 percent, survived to see the end of the war.
- 3 MILAN HOLOCAUST DEPORTATION, 1943-45**
Between late 1943 and early 1945, twenty RSHA trains left from these tracks. They were composed of livestock cars packed with thousands of prisoners, 20 trains and up to 1,200 Jewish prisoners left Milan from Platform 21 for either the Italian transit camps at Fossoli and Bolzano, or Auschwitz, Mauthausen, and Bergen-Belsen. 27 deported Jews survived.
- 4 MARZABOTTO MASSACRE, 1944.9**
In reprisal for the local support given to the partisans and the Resistance between 9.29-10.5.1944, 16th SS Division killed hundreds of people in Marzabotto and also killed numerous residents of the adjacent Grizzana Morandi and Monzuno. The victims were reported up to 770. 155 were less than 10 years old, 95 were aged 10 to 16, 142 were over 60 years old.
- 5 SANT'ANNA DI STAZZEMA MASSACRE 1944.8.12**
An operation against the Italian resistance movement during the Italian Campaign. the Waffen-SS, murdered about 560 local villagers and refugees, including more than hundred children, and burned their bodies. the victims included at least 107 children, 8 pregnant women. All this took three hours. The SS men then sat down and ate lunch.
- 6 CEPHALONIA MASSACRE, 1943.9**
This was the mass execution of the men of the Italian 33rd Infantry Division Acqui by the Germans on the island of Cephalonia, Greece in September 1943. The bodies of 5,000 men who were executed were disposed of in various ways. Bodies were cremated in massive wood pyres, or moved to ships where they were buried at sea.

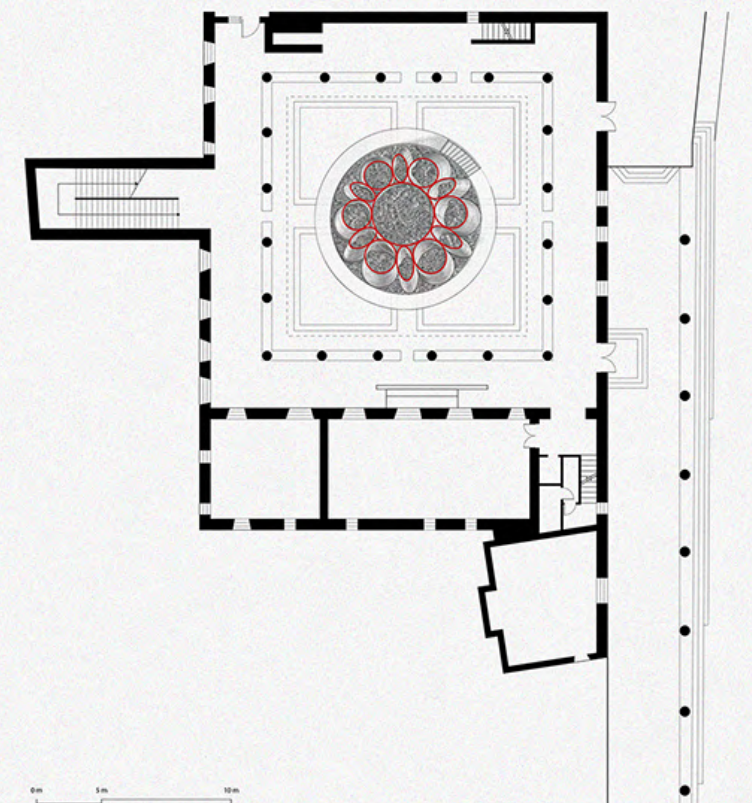
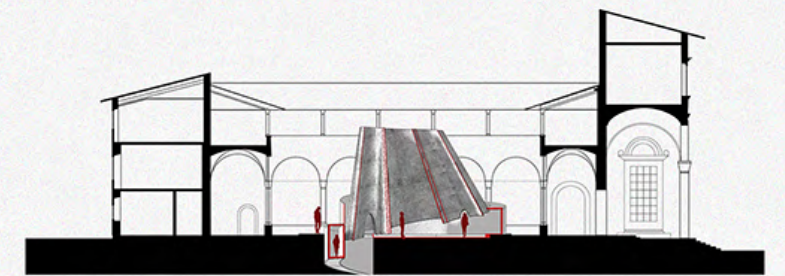
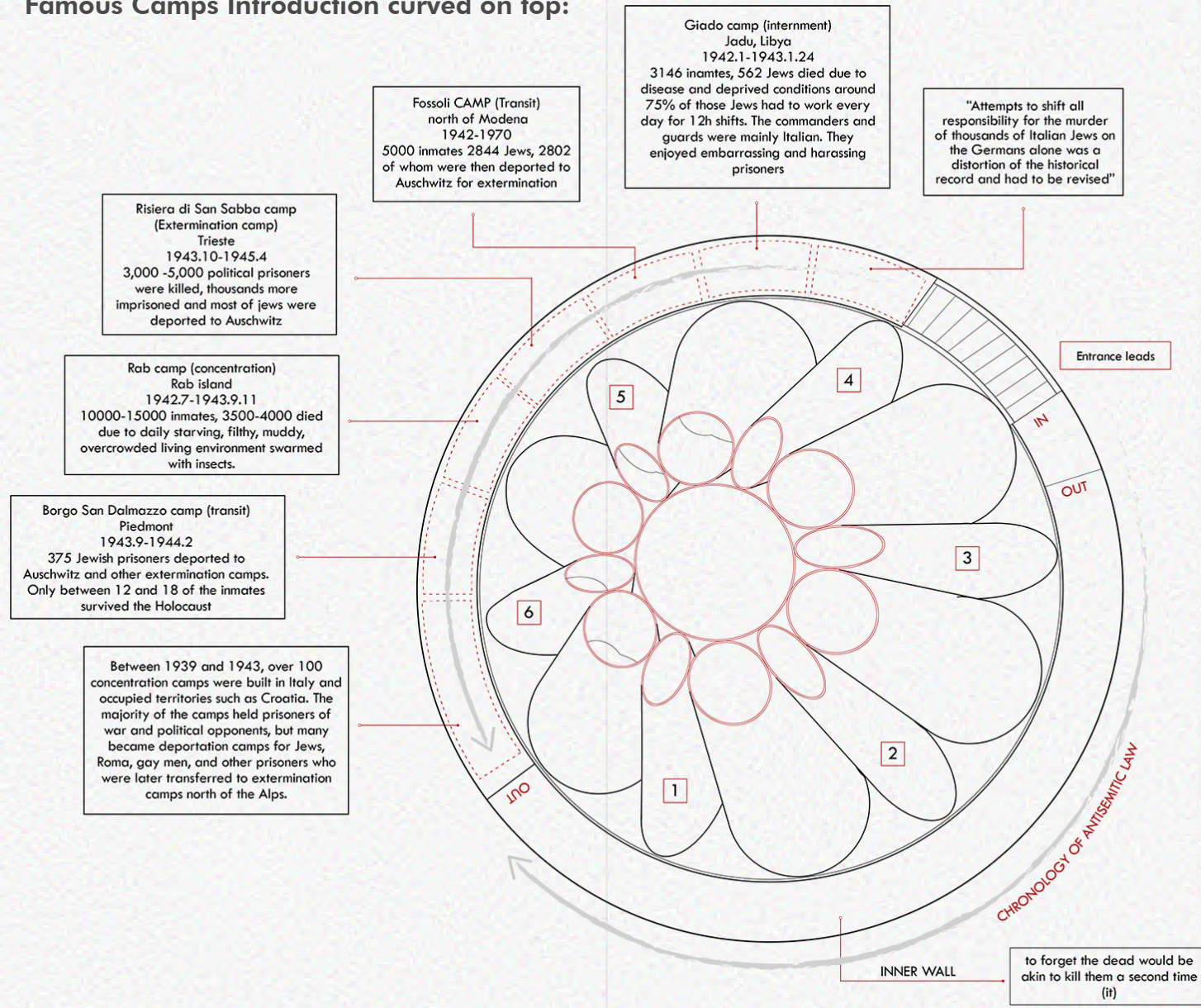
A Memorial of Ruminaton

Numbers are the most direct way of conveying information. Every holocaust event was marked by dates and number of deaths. Those data should not only be carved in the long run of history but also be deeply imprint into people's memory. Holocaust in Florence was only a tiny tip of the entire Italian Holocaust iceberg. Modern Florentines are largely unaware and indifferent of what happened on their motherland, what their government did, what the role of Italian citizens was and how Italian Jewish victims suffered. I cleared out all the essential Holocaust incidents as well as the history of Jewish legislation and curved them onto walls of my Memorial. People read and ruminate while walking orderly inside and outside the mesuem. The spacial atomosphere caters to those texts, enhancing overall sense of seriousness and level of importance towards the value of the memorial.

Entrance Leads

In October 1922, King Victor Emmanuel III appointed the leader of the Italian Fascist Party, Benito Mussolini, as prime minister of Italy. In 1938, the Italian Fascist regime under Benito Mussolini enacted a series of racial laws that placed multiple restrictions on the country's Jewish population. September 1943 signaled the beginning of arrests and systematic deportations of Jews to the concentration and extermination camps in central and Eastern Europe. Between September 1943 and March 1945, about 10,000 Jews were deported. The vast majority perished, principally at Auschwitz. Of the 45,000 Jews counted in 1938, about 8,000 died in Nazi camps. About 7,000 managed to flee. About 30,000 lived in hiding before being liberated. While many Italians stood up for the Jews, many did not. Some looked away, and some took an active, even enthusiastic, part in the persecution and removal of the 6,746 Jews sent from mainland Italy to German extermination camps. Not just Jews were brutally treated during the dark days, but hundreds of innocent Italians were also crucially murdered out of reprisals and round-ups by Germans. The memorial is built to remind people of the hidden truth of Italian holocaust, of the memorization of the victims both Jewish and Italian and of the contributions people made to fight for their homelands and for the better future.

Famous Camps Introduction curved on top:



<Plan&Section Drawing+Text Explanation Digram>
Rhino, Ai



<Detailed rendering>
Rhino, Vray, Photoshop



DIMENTICARE I MORTI
SAREBBE COME UCCIDERLI
UNA SECONDA VOLTA

*"To forget would be not only dangerous but offensive;
To forget the dead would be akin to killing them a second time..."*

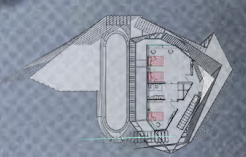
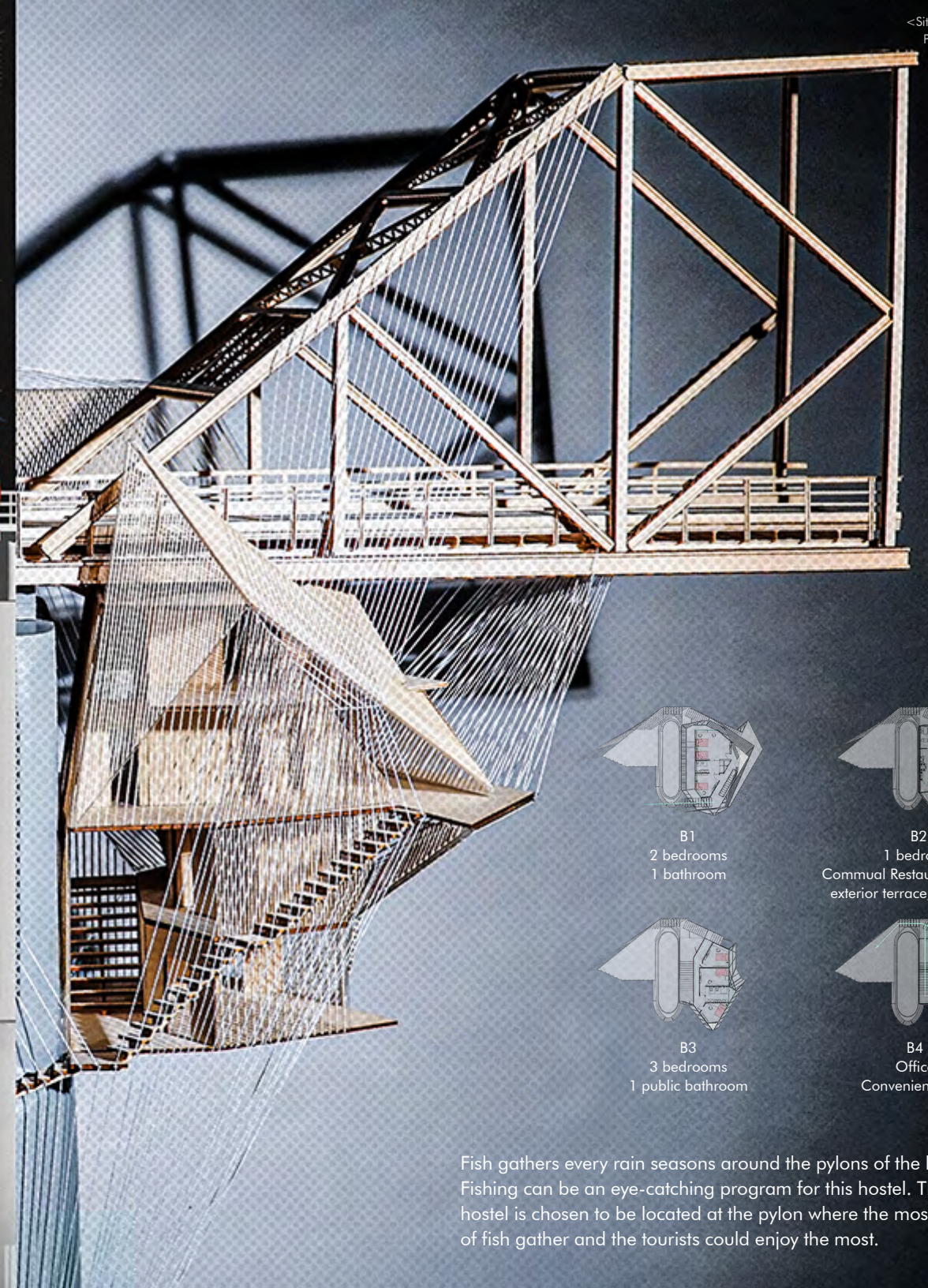
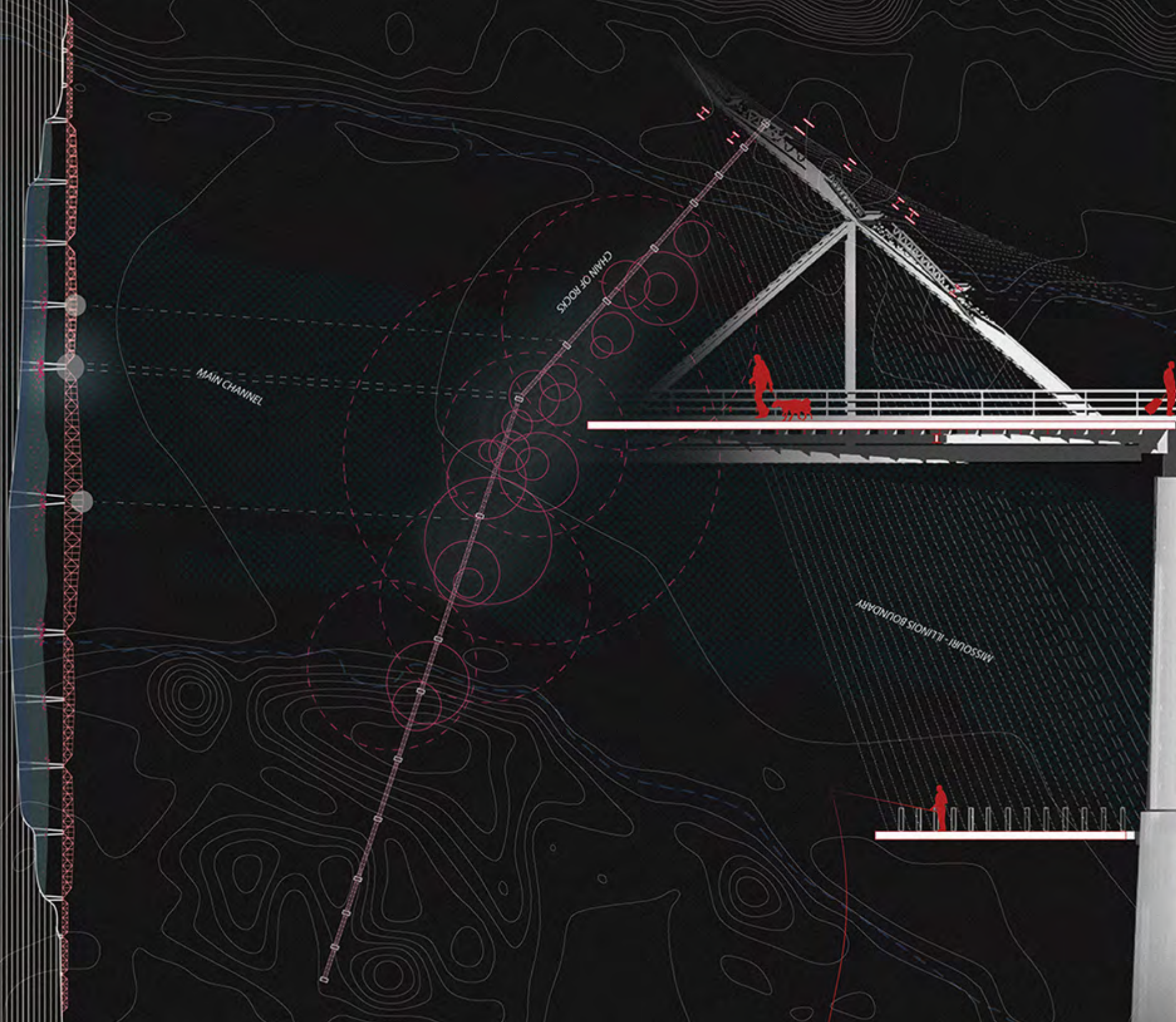
[Inhabitant]

American Hostel
Old Stone Bridge, St. Louis, USA
Instructor: Kelley Murphy

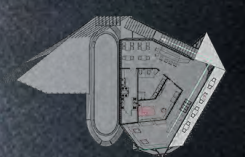
Spanning the Mississippi river, the 5353 ft long Chain Of Rocks Bridge is one of the longest continuous steel truss bridges in the US. In this semester, students are asked to study in liquid tectonics, develop individual dwelling unit and further re-imagine the American Hostel, building upon the rich history of road culture along Route 66.

The idea of “wrapping up” constructs my entire design. The outermost layer is made out of strings that provide a soft boundary to enclose all space. Within, consistent glass mullion facades offer the best shading without blocking people’s view from the beautiful river sight. Interior space are divided by functions, with public space circles around private space. Major circulation is simple. Leading by staircases, you will be easily find your way from the entrance to the fishing terrace.

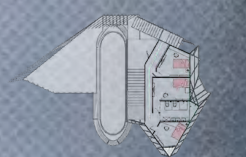




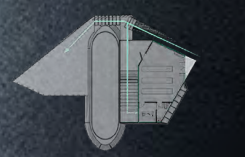
B1
2 bedrooms
1 bathroom



B2
1 bedroom
Commual Restaurant, kitchen,
exterior terrace, lobby, bath

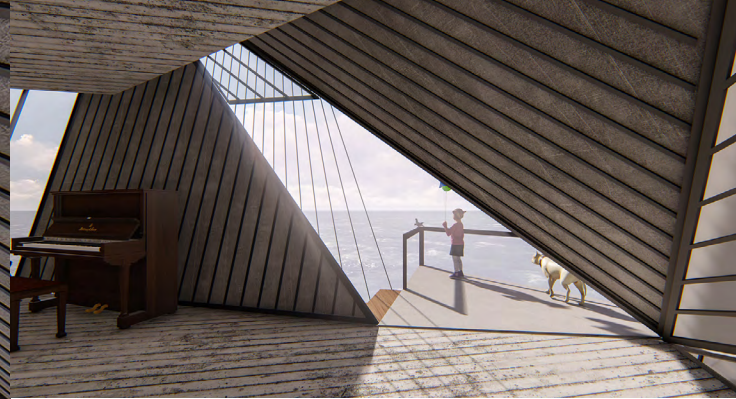
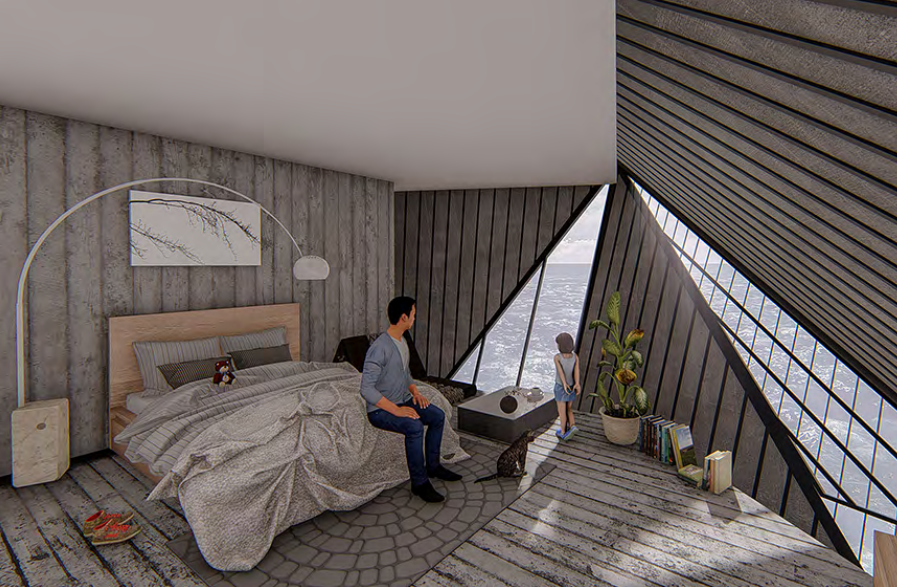


B3
3 bedrooms
1 public bathroom



B4
Office
Convenient store

Fish gathers every rain seasons around the pylons of the bridge. Fishing can be an eye-catching program for this hostel. Thus the hostel is chosen to be located at the pylon where the most amounts of fish gather and the tourists could enjoy the most.



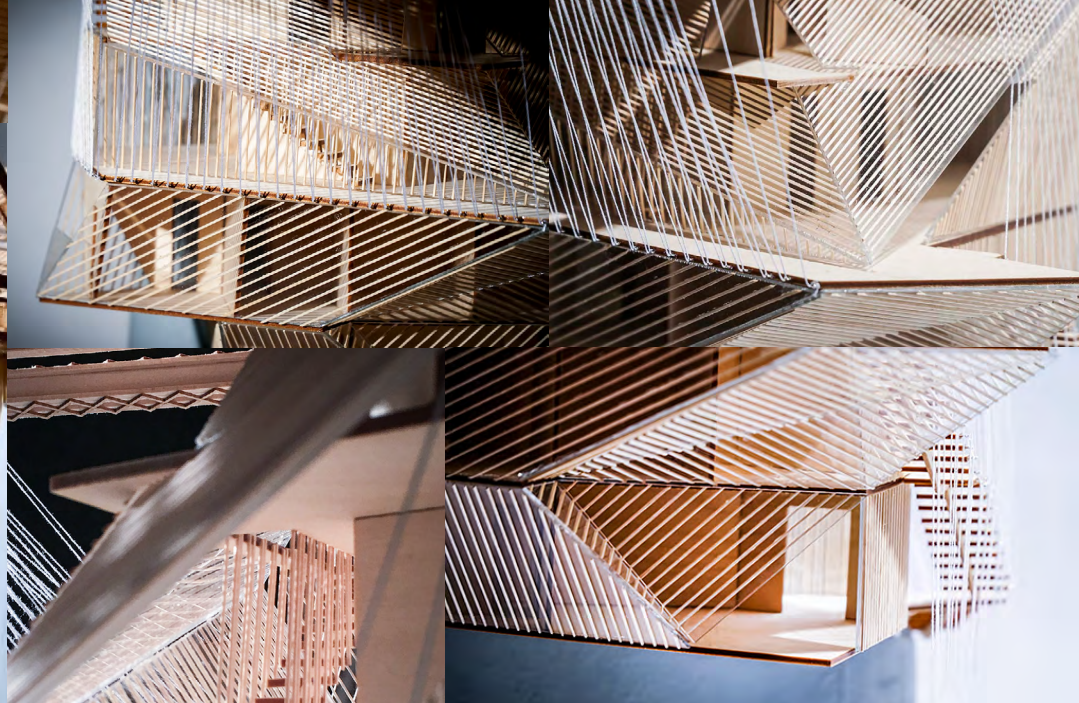
Glass mullion filter the strong sunlight and create beautiful shades. Glasses also blur the boundaries between human and nature, in and out, as if they are living in a hugr still bubble floating on the Great Mississippi river, listnering to the sounds of the Earth.



<American Hostel - Final>
Physical Model + Rendering
Photos + Rhino + Lumion + PS



<American Hostel - Final>
Physical Model
Photos



3 Facade Studies

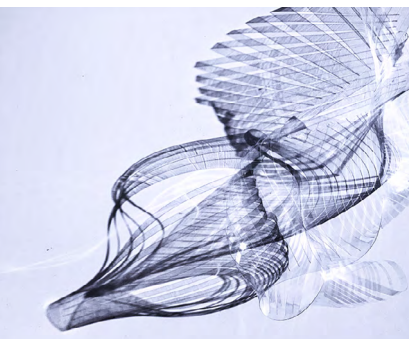
M-editating

T-ransformative

C-onstructive

[Meditating]

The Light Chapel
St. Louis, USA
Instructor: Emiliano Lopez



Developing from several interactive light devices, I create some unique light and shadow patterns by playing with transparent plastic strips.

Walking through the space, looking at the shadow casting on the ground by both trees and the church, you can feel nothing but peace. Nothing can be more intriguing and relaxing than having a nice afternoon in such a delicate, light-toned church to meditate, to pray, to talk with people about nice things happening around.



Handdraw
Pencil on paper
Study Model

This core studio is focused on light through a series of sequential projects revolving around the design of a chapel for the nearby DeMun neighborhood. The chapel project rests on the combination of spatial and symbolic qualities of light. It is a spiritual space open to all religions yet belonging to none: a center for cultural, religious, and philosophical exchange and for individual and communal prayer of all faiths.

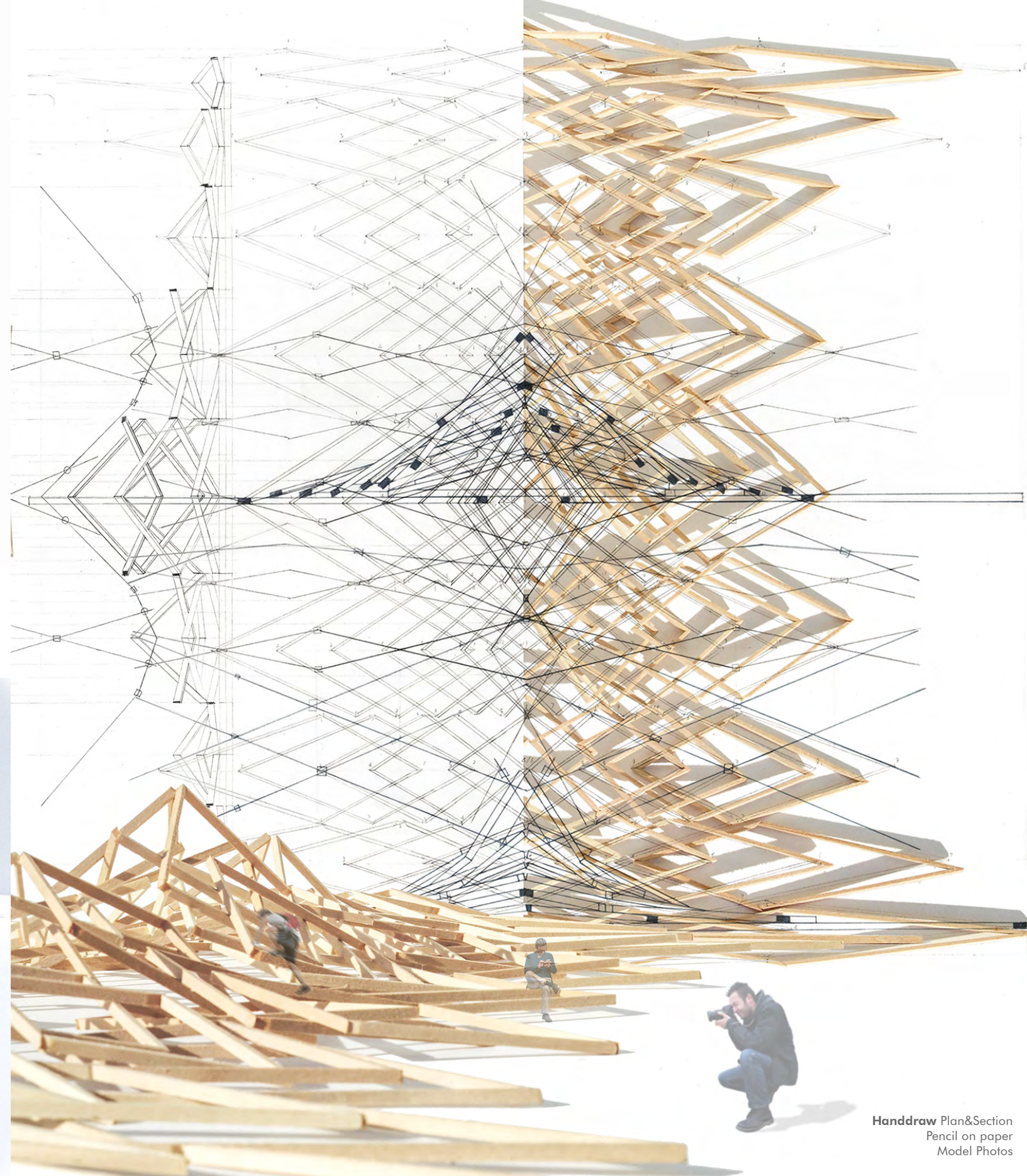


Photo
Final model

[Constructive]

Urban Topography
Instructor: Nathaniel Elberfeld

The studio probes the material, organizational and spatial qualities of the GROUND – a shared territory inhabited by plants, people, and buildings; a territory that is as much cultural as it is natural. It is a terrain in-between architecture and landscape that is made of CONSTRUCTIVE LINES: topographical lines, site lines, chalk lines, centerlines, construction lines, lines of perspective imagery, and other linear systems that enable us to see the world more precisely.



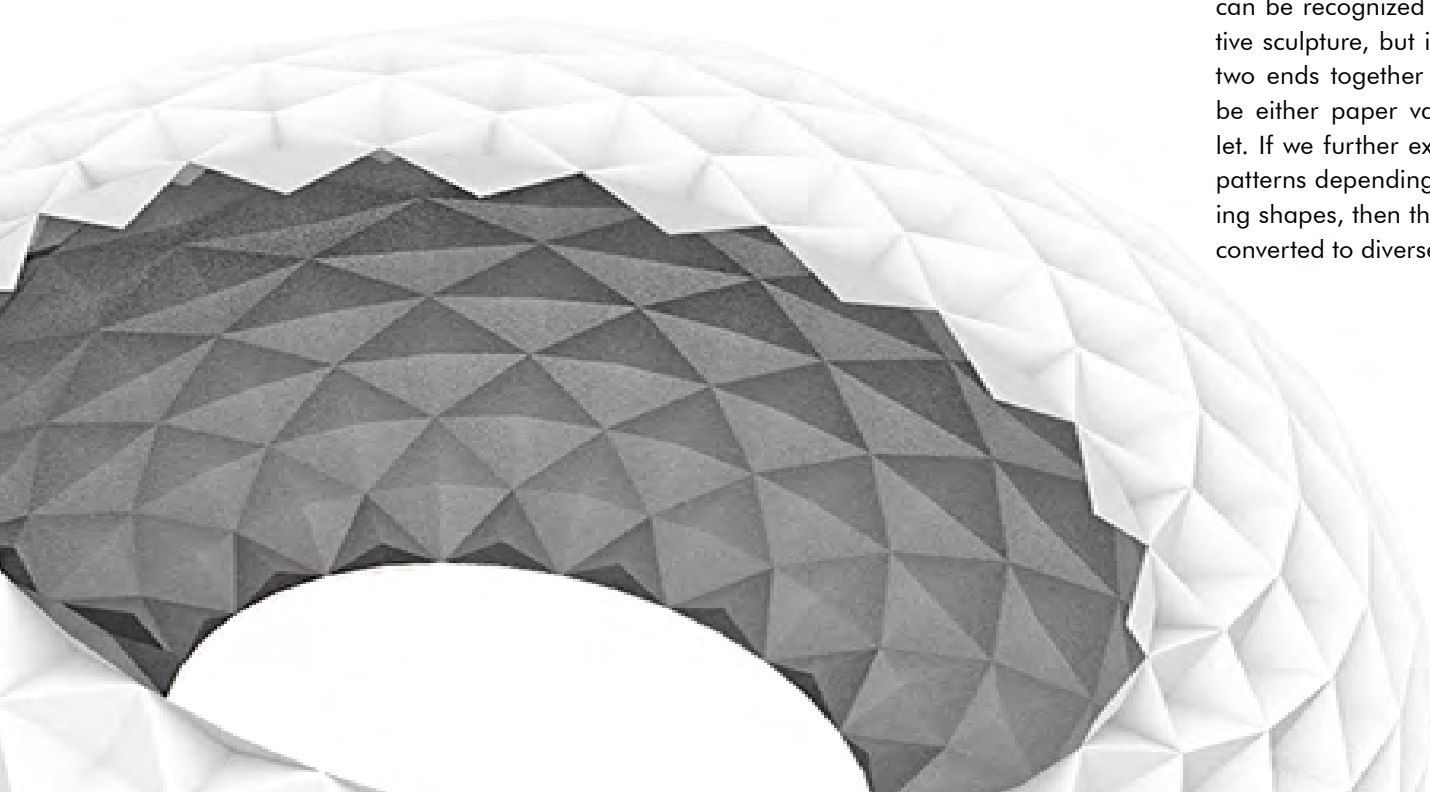
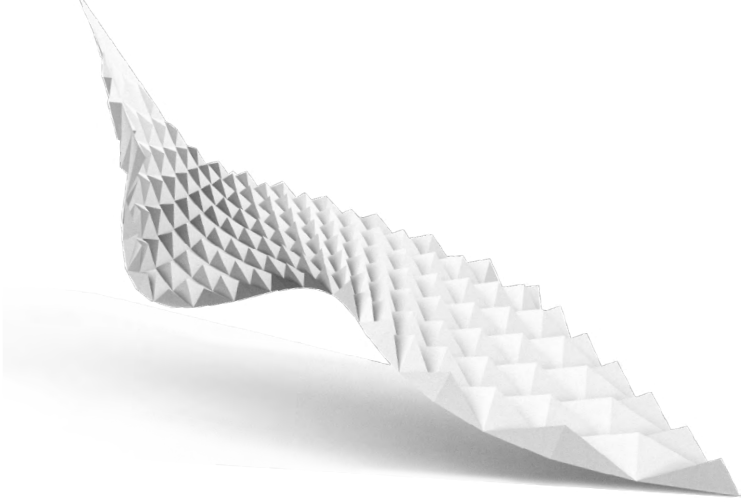
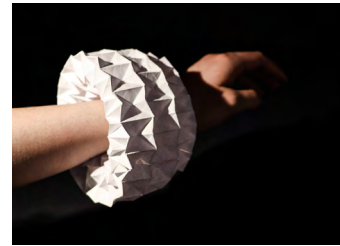
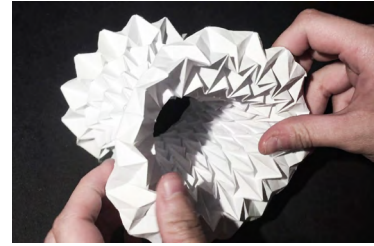
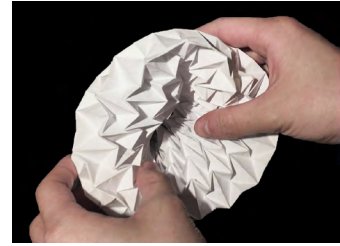
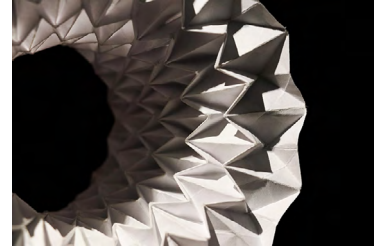
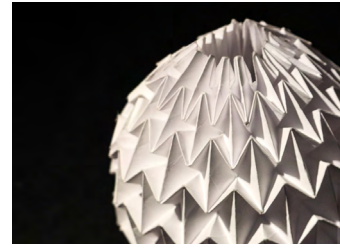
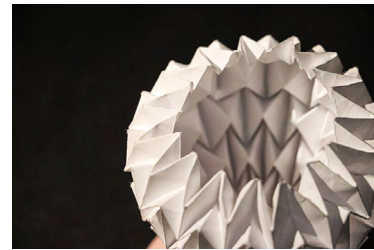
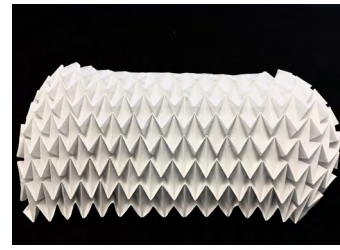
Handdraw Plan&Section
Pencil on paper
Model Photos

[Transformative]

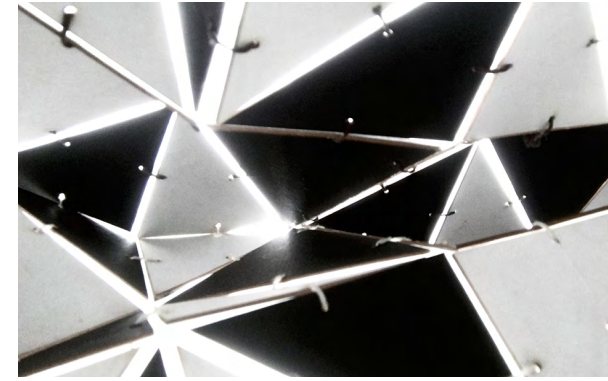
Extending Skin

Instructor: Kelley Murphy

In the 1957 text, *The Pliable Plane: Textiles in Architecture*, Anni Albers wrote, "If we think of clothing as a secondary skin we might enlarge on this thought and realize that the enclosure of walls in a way is a third covering, that our habitation is another 'habit'." The class focus on the relationships between perception, body and space through the design of inhabitable, layered constructions using architectural and sartorial techniques. Here, the design of skin systems allows for a tangible understanding of space.



The skin textile is ductile to flexibly transform to different shapes. Different shapes can function differently. As a mere skin, it can be recognized as a decorative sculpture, but if we glue the two ends together then it could be either paper vase or bracelet. If we further extend the skin patterns depending on the existing shapes, then the skin can be converted to diverse styles.



Inspired by the flexibility of shape changing of the magic ball, I redesigned the surface



Physical Model made by Mylar, Paperboards, treads in various techniques; Study/Final Model photos + Photoshop



I applied materials onto the original skin surface and fold it into all kinds of shapes. When I was exploring the skin, I found out under the mountain folds, there exist various space. When there is roof, there is human-occupiable space. Looking at the photos I took, I imagined diverse functions the space could hold. It can be underground tunnel, art museum, pop-up shops or even an overhang of one huge building.

2 Researches

> *River Basin Management
Review Committee
trans-boundary Report*

> *Drawing from Lina Bo Bardi*

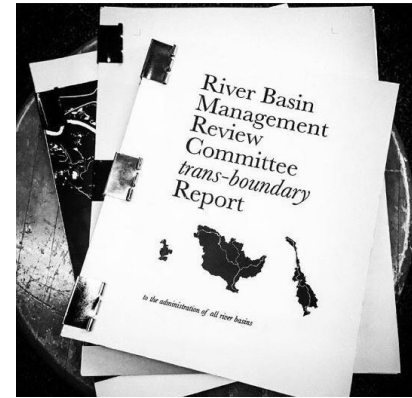
[River Basin Management Review Committee *trans-boundary* Report]

Instructor: Derek Hoeflerlin

Group Member: Caroline Amstutz, Michele Chen, Jake Deluca, Helen Han, Yin Li, Patrick Murray, Rodrigo Poma, Jimmy Ryoo, Will Sun, Rita Wang, Joie Zhang, Tiffany Zheng

The "trans" prefix provides a lens for which to analyze and understand watershed issues of the past, present and future. Whether political, geographical, economic, or social, we exist and operate in a global age of boundaries. Water traverses through all, challenging the very boundaries that we create to control it.

To embrace the prefix of trans means to understand water for what it is -- a fluid. By adopting a mindset of fluidity, watersheds can be understood holistically. Through a comparative analysis of three river basins that embody the word trans, we seek to shed light on the perils of boundary-making and suggest a more trans approach to understand the water that pulses through our rivers, our earth and our very bodies.



River Basin Management Review Committee *trans-boundary* Report



to the administration of all river basins

I was in charge of coordinated Mekong narrative, drew maps for Mekong section of the environmental issues from causation to phenomenons to solutions and wrote relative texts for each maps, along with team members.



Water: the *sine qua non* of life

—without which nothing

Water is power. Water is political. Water is the common thread tying us all together, yet also the reason for our own fragmentation. Whether seen as a right or a luxury, our interactions with water shape our existence, our politics, our collective culture. Our understanding of water reflects the political boundaries we've unsuccessfully imposed upon it; fragmented broken. This fragmented understanding of water and our human desire to impose upon its course is the crux of the following analysis.

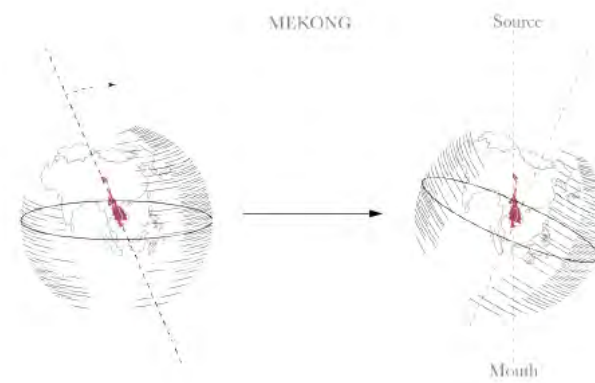
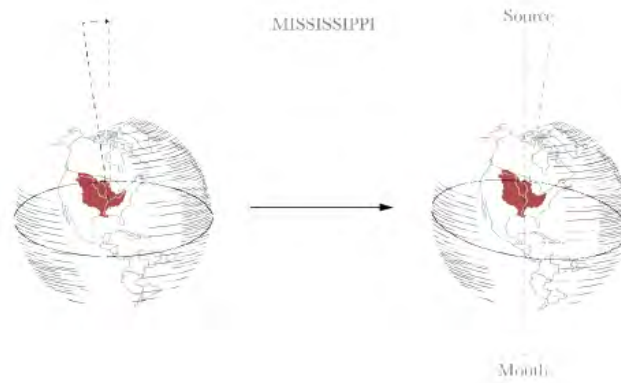
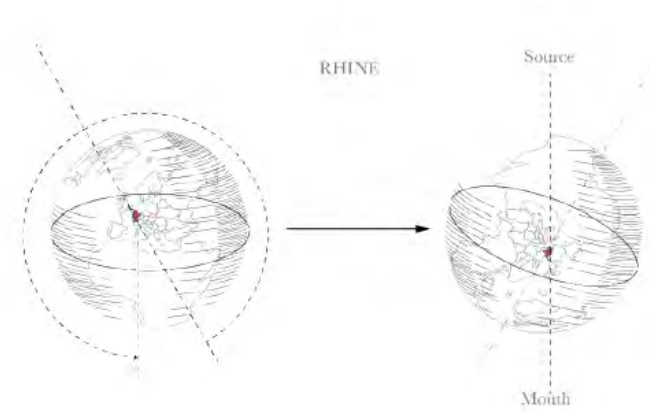
The Rhine, Mississippi, and Mekong river serve as portals to view hydro-fragmentation: its roots, effects and lasting impacts. These three river basins serve as a framework of analysis which can be applied to all other global river basins.

Our analysis peers through the conceptual lens of the word "trans." We aim for an understanding of the river basins that rejects contemporary politics and boundaries. One which embraces the very qualities of water that make it impossible to control.

In order to unpack the complicated relationship status with water, we must understand our past. Through analyzing the management, governance, and political history of each basin, a narrative about power can be extracted. Based on power, wealth, and the interests of a few, our approach to controlling water is in precise opposition of its virtues, its fluidity and freeness.

Water knows no boundaries; through recognizing the artificial boundaries that we impose on water, we realize the limits we have in controlling it. This transboundary, trans-basin analysis sheds light on the past, present, and future of our watersheds and their importance for the future of all life.

Ultimately, we will suggest a new approach to understanding watersheds: an approach that reorients of point of view - adjusting our position to place water first. The new orientation sets each basin geographically from source to mouth. This shift prioritizes water, allowing us to speak a common language with water, to play by its rules. The adoption of this point of view resets our understanding of river basins: water is trans.



"trans"

—across, beyond, crossing, on the other side.

transaction/transcend/transboundary/transcontinental/transdisciplinary/transsect/transfer/transfiguration/transfix/transform/transgender/transvestite/transgress/transient/transit/transition/transitory/translation/transliterate/translocate/transmigrate/transmission/transmogrify/transmountain/transoms/transparency/translucency/transplant/transportation/transpiration/transonic/transversal

The "trans" prefix provides a lens for which to analyze and understand watershed issues of the past, present and future. Whether political, geographical, economic, or social, we exist and operate in a global age of boundaries. Water traverses through all, challenging the very boundaries that we create to control it.

To embrace the prefix of *trans* means to understand water for what it is — a fluid. By adopting a mindset of fluidity, watersheds can be understood holistically. Through a comparative analysis of three river basins that embody the word *trans*, we seek to shed light on the perils of boundary-making and suggest a more *trans* approach to understand the water that pulses through our rivers, our earth and our very bodies.

what defines a river basin?

A river basin is the portion of land drained by a river and its tributaries, separated from adjacent basins by a drainage divide.

This definition comes from a scientific perspective. Taken broadly, a river basin includes all the rivers and creeks flowing in it; the humans, flora and fauna living in it; the cities and towns drinking from it, as well as the natural and political boundaries defining and separating it. In this report, we will be looking at river basins in both ways, unpacking the tug-of-war between politics and geography; humans and nature.

why Rhine, Mississippi, Mekong?

past,
present,
future.

To examine how water has shaped the way people live, we have chosen to focus our study on three of the largest river basins in the world—the Rhine, the Mississippi, and the Mekong. These three basins represent the *past, present, and future* of watershed architecture.

The Rhine has long established success in water management dating back to antiquity. The river represents the past and sets an example for other river basins of the world. The political stability and historical and current structure of the nations allows for greater unity when devising legislation to protect the water and the people within the watershed.

The Mississippi, representing the present, is at a critical moment. The river has a rich history of infrastructure for the protection of people and the economy, but the systems are beginning to crumble. The issues of the Mississippi are current, without sufficient funds and resources to tackle contemporary issues, the Mississippi river will begin to degenerate.

The Mekong, which flows through six nations in southeast Asia and impacts the livelihoods of many more, represents the future. The worsening effects of climate change and tension created by internal conflicts among nations pose a question about the sustainability of the river basin. Lacking in transnational unity to achieve successful water management, the Mekong represents a dream of achieving a harmonious coexistence between humans and nature by governing the watershed.

We tell the stories of three biggest river systems of the world...

ivers in numbers

LONGEST MEKONG
 Length: 4,373 km (2,717 miles)
 Catchment: 8,171,000 km² (3,155,217 sq mi)
 Discharge: 163 km³ (39 cu mi) per year

LARGEST BASIN MISSISSIPPI

18

Rhine

The Rhine flows south to north, from the Alps to the North Sea. Although the Rhine has a diverse set of headwaters, the common two sources of the river are the Lake Toma in the Central Alps and joins the Posterior Rhine near the Swiss-Italian border. From there, it forms part of the border between Germany and Switzerland as well as France. Finally, 1,230 kilometers from its source, the river breaks up in a number of wide branches and enters the North Sea right south of Rotterdam.

20

Sample pages of our book where I was mainly in charge of...

Upper Basin

20

Economy and Energy

Yunnan, one of the key provinces for China's west-east power transmission, is developing hydropower stations along Lancang River. Apart from Manwan hydropower station, four other hydropower stations along the main course of Lancang River are under construction or being planned.

These hydropower stations are built to support the rapid economic development of cities in the south-east coastal provinces of China. China has made major investments for the development of hydropower dams in Yunnan province with the intention of transmitting the energy to these rapidly developing cities.⁴⁵

20

Mississippi

The Mississippi river flows entirely within the United States, starting its journey from Northern Minnesota to the Mississippi River Delta in the Gulf of Mexico. Two of its biggest tributaries, the Ohio River and the Missouri River, begin their flow from Allegheny, Pennsylvania and Brower's Spring, Montana respectively. The Ohio joins the Mississippi at Cairo, Illinois while the Missouri river reaches its confluence just north of Saint Louis, Missouri.

22

Mekong

The Mekong River begins its flow from the Tibetan Plateau. From there, the river passes through China's Yunnan Province, Myanmar, Laos, Cambodia and Vietnam. The Mekong River enters the East Sea (South China Sea) through a network of dense tributaries at the Mekong Delta. The region is dubbed *The Nine Dragons* from the original number of branches that run into the ocean.

24

Issues on the Mekong

Forest depletion: As part of the war strategy in the 1950s, a large number of forests in the northern provinces of Vietnam were depleted using herbicides to control enemy and civilian movements. This depletion was not only for military purposes but also for ecological food chains and habitat systems, which still mostly affect the entire ecosystem of the area. The Mekong Main course of the river is heavily impacted regionally by chemical residues. From eggs to eggs, it received high doses of herbicides and defoliant.

Soil properties damage and migration: After penetrating through coastal basins, the land properties around the Mekong river basin have also changed. Specifically, the soil has experienced significant damage from the pollution and wastes from chemical applications. The pattern of impact closely matches with the flight paths of agricultural pesticides, and equal to other types of herbicides triggered by the pollution and wastes, and the soil properties are also damaged with the growing, the amount of rice agriculture decrease rapidly.

Increase in agriculture: Alternatively, agriculture, specifically rice and other crops are more and more grown in the low-lying areas around the Mekong river basin. The rice production has increased by global warming introduced a huge amount of sea water inland. As inland river water gets saltier, more rice farmers are responding by switching to more salt-tolerant farming or growing rice.

Agriculture depletion due to insecticide: From eggs to eggs, the global warming effect caused a proliferation of invasive insecticide, which is spreading to the river, as the sea level keeps rising the range of insecticide is also increasing and the only green of the rice field is being eaten by insects (insects) a year, but for Vietnam's growing up system (insects) a year.

26

24

Livelihood

The urgent need for wetland restoration and rehabilitation at large spatial scales have been addressed through the restoration of the river water from the Mississippi River. This management strategy aims to deliver sediment-laden water to decline wetlands areas and promote wetlands productivity, using natural water control structures to regulate basin area and ecological wetland.

Robust, large-scale restoration protection, along with coastal protection and community resiliency measures, are our best solutions for reducing land loss, protecting our communities and cities, and ensuring a sustainable future for generations to come.

Restoration of a healthy productive Mississippi River Delta requires a variety of restoration solutions including re-nourishing the river to the delta through levee building, wetland creation, strategic use of dredged sediment to build and restore wetlands and barrier islands, improved management of the Mississippi River as well as adopting community resilience measures, such as home elevation.

Development of these principles is guided by the Multiple Lines of Defense Strategy (MLD), which is designed to the elements of Hurricane Resilience as a way to build resilience for communities and industries along the coast. The strategy consists of coastal resiliency, in addition to flood protection as well as community resiliency measures in the interior. In the interior and levee together, America has good flood height levels of storm surge protection for cities, communities and businesses.⁴⁶

18

Issues on the Mekong

Forest depletion: As part of the war strategy in the 1950s, a large number of forests in the northern provinces of Vietnam were depleted using herbicides to control enemy and civilian movements. This depletion was not only for military purposes but also for ecological food chains and habitat systems, which still mostly affect the entire ecosystem of the area. The Mekong Main course of the river is heavily impacted regionally by chemical residues. From eggs to eggs, it received high doses of herbicides and defoliant.

Soil properties damage and migration: After penetrating through coastal basins, the land properties around the Mekong river basin have also changed. Specifically, the soil has experienced significant damage from the pollution and wastes from chemical applications. The pattern of impact closely matches with the flight paths of agricultural pesticides, and equal to other types of herbicides triggered by the pollution and wastes, and the soil properties are also damaged with the growing, the amount of rice agriculture decrease rapidly.

Increase in agriculture: Alternatively, agriculture, specifically rice and other crops are more and more grown in the low-lying areas around the Mekong river basin. The rice production has increased by global warming introduced a huge amount of sea water inland. As inland river water gets saltier, more rice farmers are responding by switching to more salt-tolerant farming or growing rice.

Agriculture depletion due to insecticide: From eggs to eggs, the global warming effect caused a proliferation of invasive insecticide, which is spreading to the river, as the sea level keeps rising the range of insecticide is also increasing and the only green of the rice field is being eaten by insects (insects) a year, but for Vietnam's growing up system (insects) a year.

26

Deforestation

China's dam construction on the Upper Mekong has blocked the freshwater and sediment from the north, increasing water intake from the south and decreasing the delta land composition.

Dam raising: After hydropower dam construction, a large scale and rapid happening in the delta is an ongoing land composition with land being lost and erosion every year, and the damage is getting to be more severe when Laos, Cambodia, Thailand and Vietnam start building more dams on the lower Mekong basin following the trend. According to the data, several one billion cubic meters of land would be needed by 2050 to fill the demand for construction materials in the Mekong delta region.

MRC and government's independence: Even though the MRC coordinates water resource development between its member countries in the Mekong basin trying to ensure the river and to raise the pressure on dam construction and dam decommissioning. The governments' independence and their construction consequences. The governments' independence of the dam has been an obstacle to the MRC's responsibility to ensure the river change along river flow, while national planning have been developed to boundary planning have not been established.

26

Deforestation

Energy infrastructure development, such as dams for hydroelectric power, have a significant impact on forests as well as other ecosystems. Dam construction often has large impacts on local populations as well, displacing communities as the reservoir area is flooded.

Better city and areas, the Greater Mekong sub-region (including China) has been a global focus since the 1990s because of its strategic location. The region has become a major focus for large-scale investment because of its strategic location. The region has become a major focus for large-scale investment because of its strategic location. The region has become a major focus for large-scale investment because of its strategic location.

26

[Drawing from *Lina Bo Bardi*]

St.louis, USA

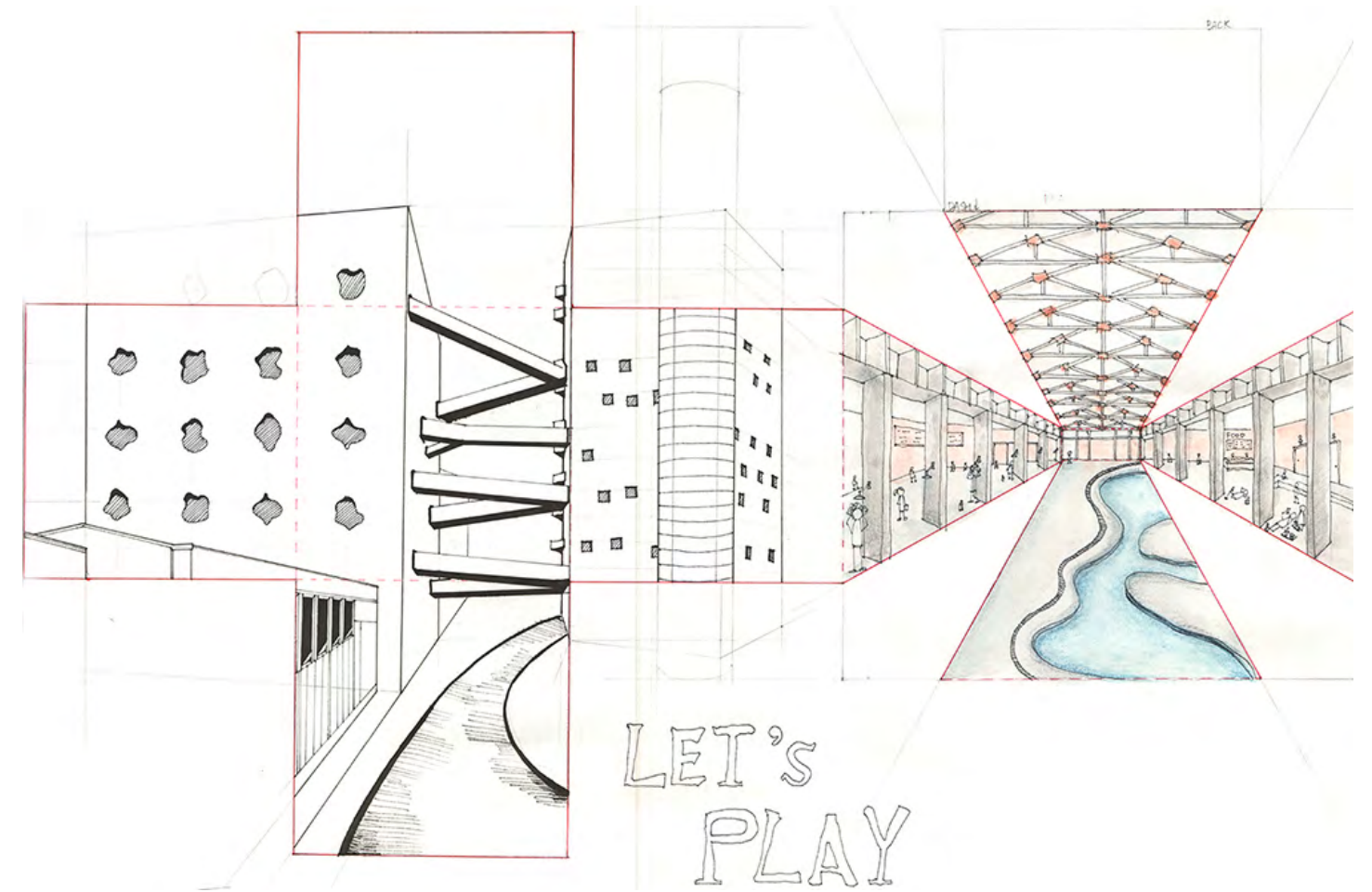
Instructor: Zeuler Lima

This studio proposes to explore the vast possibilities in the relationship between drawing and design through the works of Italian-architect Lina Bo Bardi (1914-1992). Her unique drawings were imbued with the sense

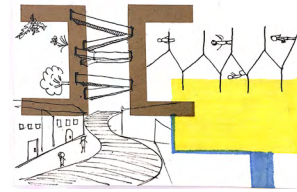
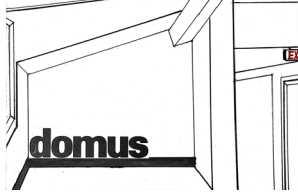
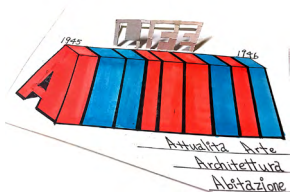
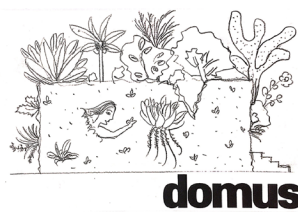
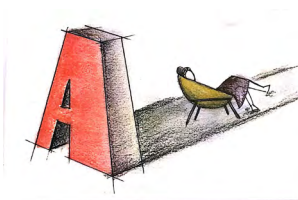
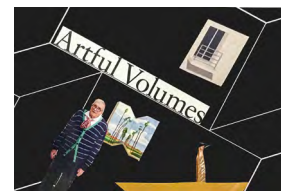
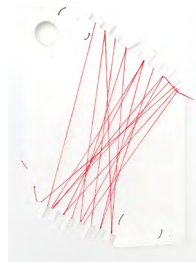
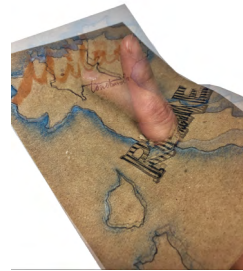
that architecture is the place for social interaction and that the role of designers is to create opportunities to enhance everyday life.

Similar to her approach, we developed our drawing and design skills simultaneously, prioritizing mechanical and analogical media over digital representation. Guided preparatory exercises will lead to the definition of self-initiated projects individually by each student. In order to better project changes in reality through drawing, I chose to redesign the most popular site in St.louis, the City Museum. City Museum is a very representative case in St.louis where one sight's popularity hasn't yet radiate to its surroundings. I decided to turn St.louis from a loose connected chaos to a vibrant and accessible city just like Bo Bardi did to Sao Paolo.

Through such a process, I gradually comprehend Lina Bo's idea on designing for human, enhancing their level of happiness from the unit of one single family to an entire city.



[Personal Vision, Multiple Perspectives Drawing A Deck of Cards]



[Lina Bo Bardi: architecture and inhabitation Drawing (in) a model]

Entitled [Playful], the poster further explored Lina Bo Bardi's serious architectural understanding throughout very playful and "unserious" drawing approaches. She chose to use colorful and loose drawing style to address her rebellious approaches to architectural space.

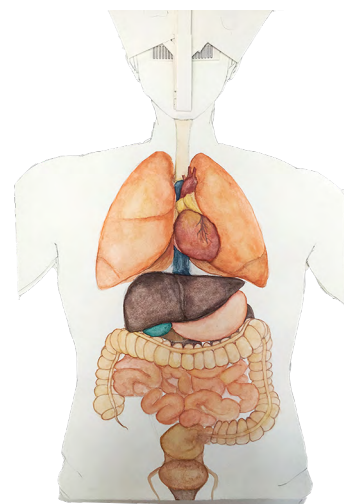
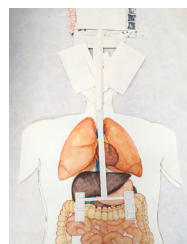
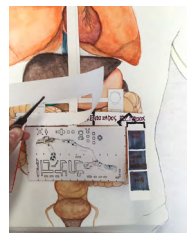
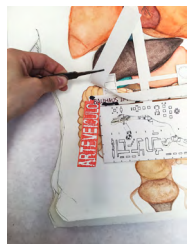
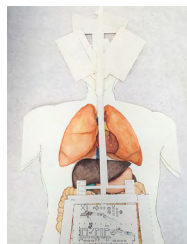
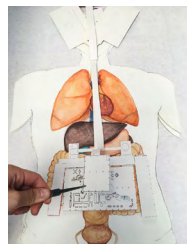
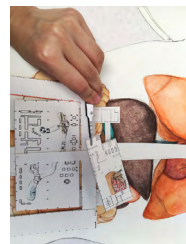
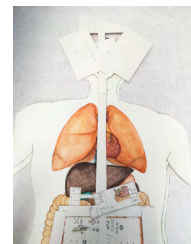
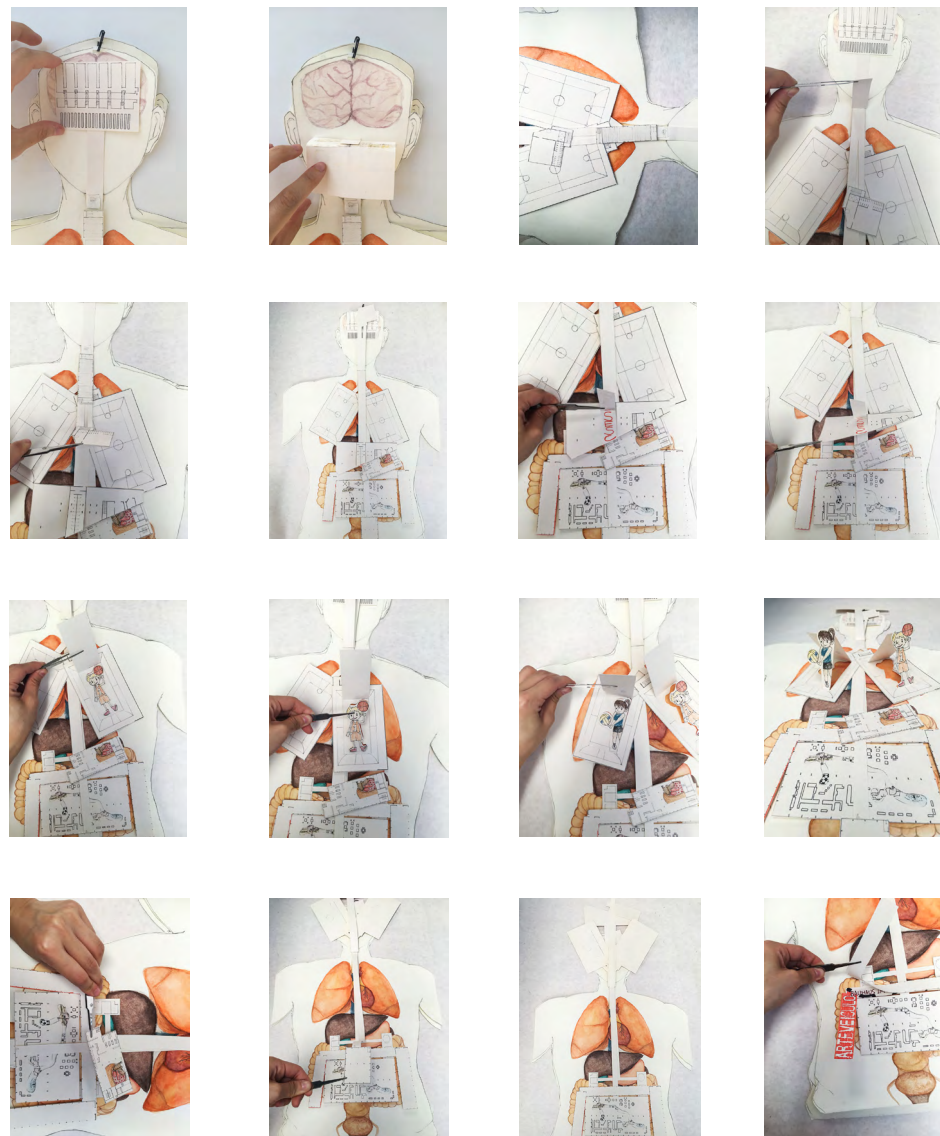
I chose her most playful project SESC Pompeia to help realize my drawing.

I combined the vividness of 3-dimension and the flatness of 2-dimension, as well as the seriousness and the playfulness, to illustrate Bo Bardi's idea of creating a space for people themselves to interact with, to interpret and to define. Dependent on the person who is interpreting, the significance varies.

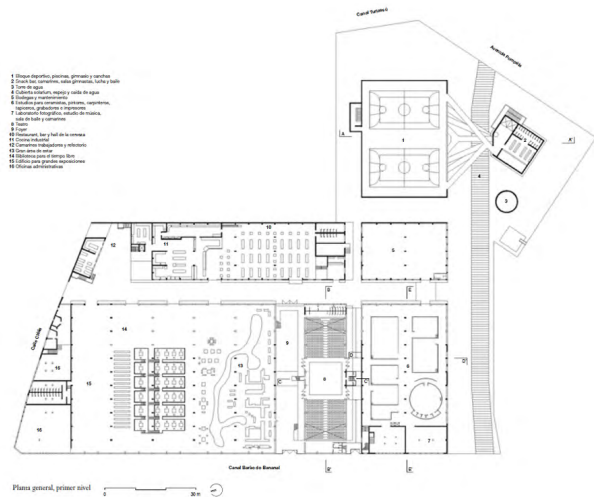


[Lina Bo Bardi: drawings on display
Drawing (in) a display case]

SESC Pompeia is the most occupiable building re-designed by Lina Bo Bardi. It allows all human activities happening in one place with no hierarchy. Then, what if, by inverting such an idea, to make human being to be occupied by the building, SESC, what it will be?



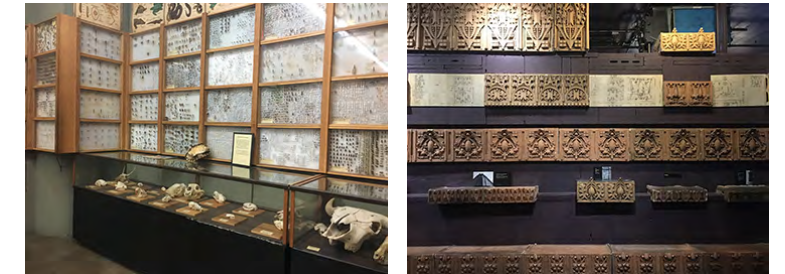
<Drawing>
Watercolor on Arches



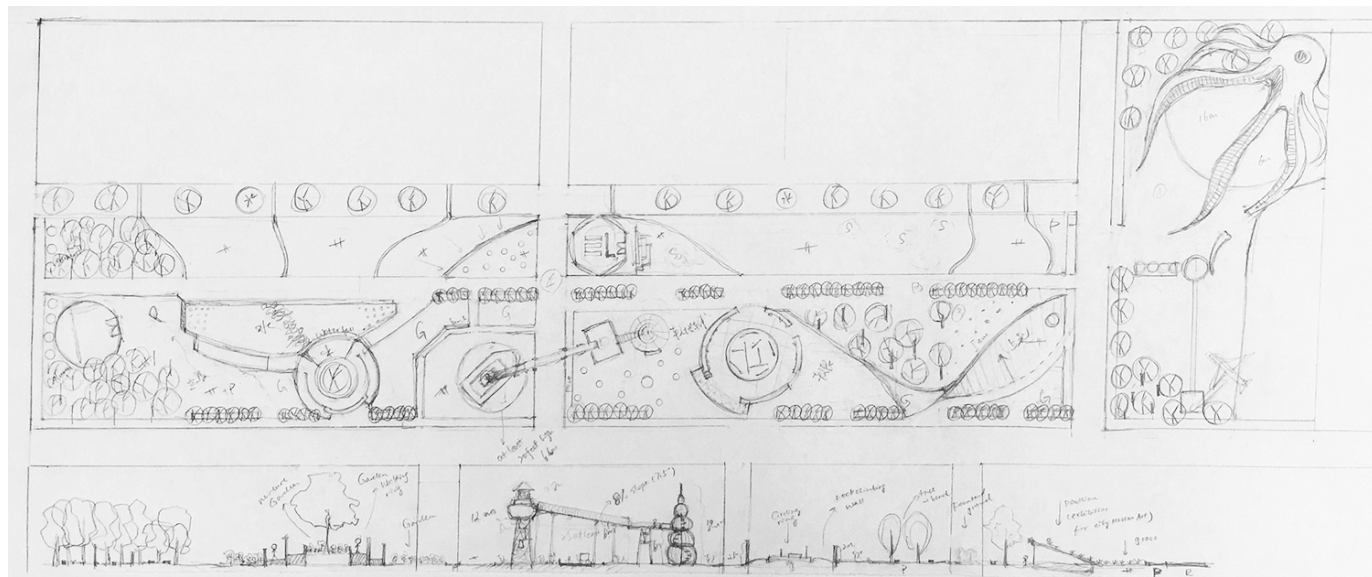
[Lina Bo Bardi, what if?
Drawing analogies: São Paulo – Saint Louis]

In order to activate the entire City museum neighborhood, I decided to release the ground-level parking including parking lots and street parking and transfer into a playful and beautiful city park. By relocating all the parking lots in between N14th St. and N18th St, street parking spots in this neighborhood all to the back of the City Museum, a vertical parking lot building can be built on the original 1929 Lucas Ave. Through this approach, the space in front of the City Museum is cleared out for re-designing, and the streets surrounded can be narrowed down as green pedestrian pathways in order to attract more people from heart Downtown area north up.

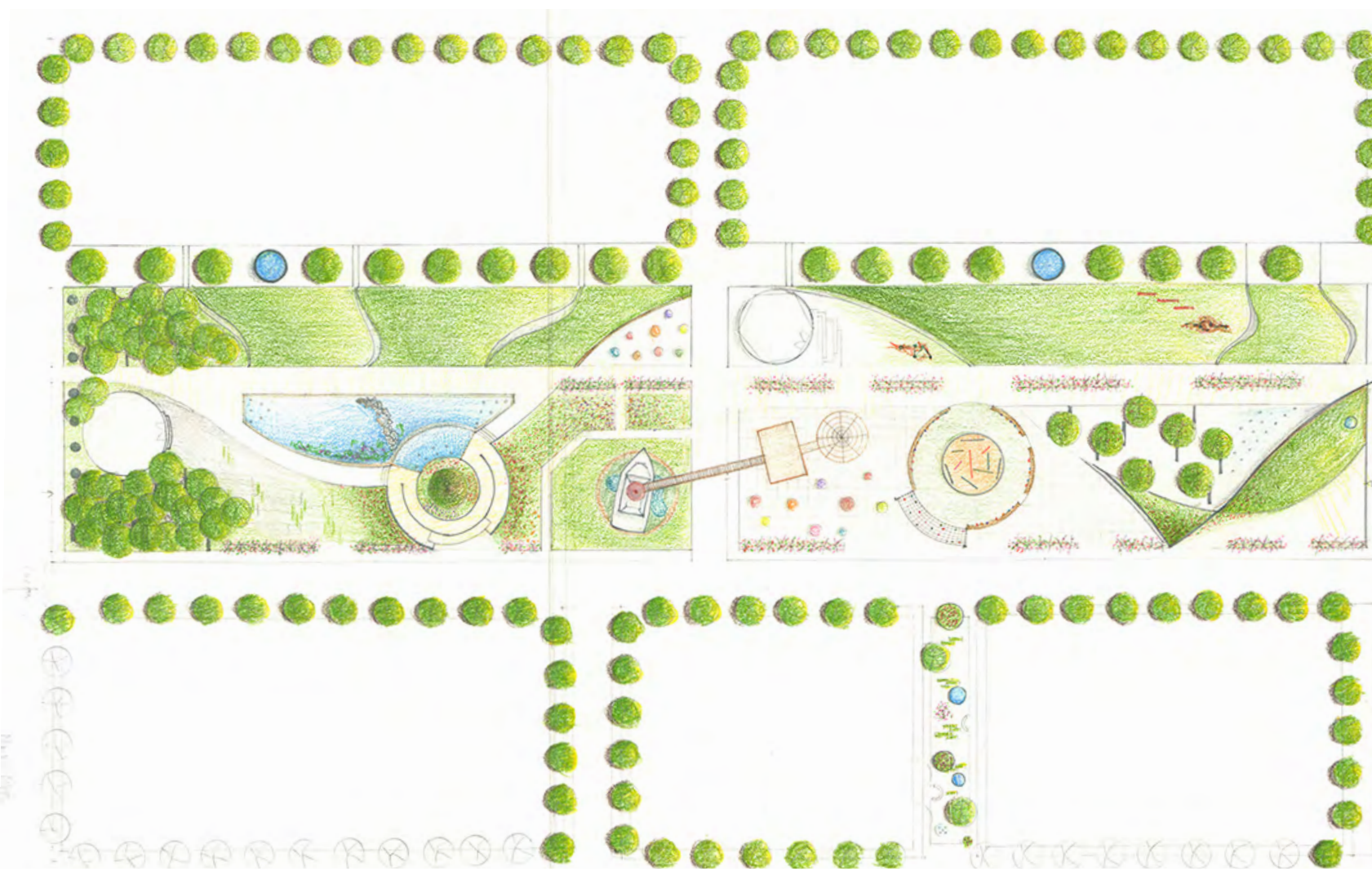
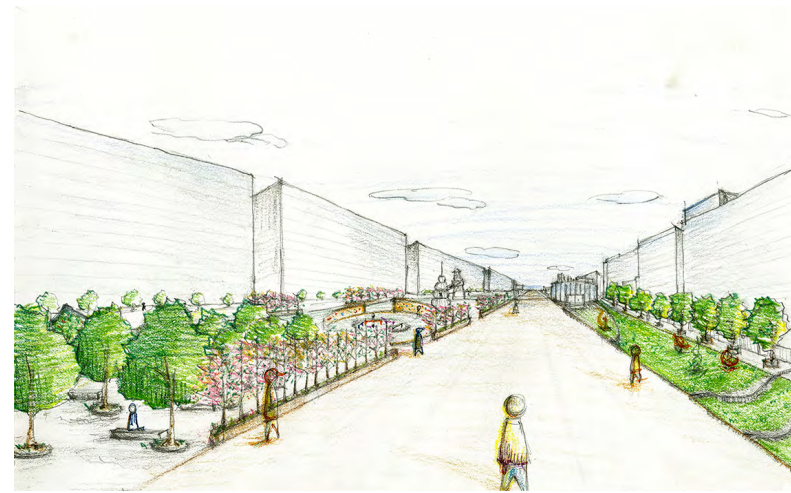
The re-design of the City Museum Neighborhood is aimed to function as a belt of the city to connecting the busy Washington Ave. with the obsolete Delmar Blvd in the N-S direction, as well as blending the playness of City Museum to the seriousness of St.Louis Urban life in a horizontal E-W direction.



On the left the a site analysis on City Museum neighborhood. In front of the museum is currently built as three consistent parking lots. On the West there are three broad streets which allow three to four cars pass over at the same time. All those spaces seem redundant and wasteful. But with a certain re-arrange and re-construct, all those boring spaces can be released for better use. When I visited the City Museum, I was amazed its richness of collection, its playfulness of the space, and its creativeness of the entire decorative interior design. But except the first two floors where playgrounds were mostly built in, few people will actually climb up to floors where the real museum parts are located. I hope those unprecedented collections to be seen by more people thus, I decided to horizontally tile what inside the museum out, making the entire neighborhood to become the new City Museum.



<Draft Plans>
Colored pencils on tracing paper



ome green
g or spent
ttract more
ringing people

d to the
heir lunch on
west side of
ame princi-
l inside the
ing lots were



<Plan & Sections of Final Design Proposal>
colored pencils on Arches
24 inches x 44 inches

1 Publication

[Bias and Inclusion]

Women in Architecture & Design

Members: Linda Deng, Jingqi (Jessica) Fan, Allie Henner, Michelle Kim, Jenny Li, Ruth Blair Moyers, Anya Pawar, Kaitlyn Schwalber, Olga Sobkiv, Elise Wang, Rita Wang, Audrey

Western, Kelly Whelan, Claire Wiley

Instructors: Isidro Landa, Heather

Corcoran, Kelley Murphy, Lisa Wiland

This publication is a means of amplifying un–heard voices regarding topics that are taboo or uncomfortable to talk about. We hope to en–gage the Sam Fox community in a conversation concerning the unfamiliar and unspoken ter–ritories and implore change within our school. Thank you to all who helped bring this publi–cation to life – students, faculty and staff.

Alternatively, see the full publication at:

<https://issuu.com/wiadsamfox/docs/bias-inclu-sion-survey-report>



Thank you for your participation! The survey is provided by Women in Architecture + Design, a professional and advocacy group for women and minorities within the Sam Fox community.

SEXUAL ASSAULT RESPONSE TEAM

Jessica Kennedy
DIRECTOR, TITLE IX OFFICE & TITLE IX COORDINATOR
314-935-3118
jwkennedy@wustl.edu

Mark Glenn
CHIEF OF POLICE
314-935-8088 or 314-935-5555 (WUPD)

***Kim Webb** (not a mandatory reporter)
DIRECTOR OF THE RELATIONSHIP AND SEXUAL VIOLENCE PREVENTION (RSVP) CENTER
314-935-8761 (weekday office hours) 314-935-8080 (24 hours)
kim_webb@wustl.edu

WUSTL BIAS REPORTING
diversityinclusion.wustl.edu/brss/

PROVIDED BY WOMEN IN ARCHITECTURE + DESIGN

SAM FOX BIAS & INCLUSION SURVEY

SPRING 2018

The intent of the survey is to give students of Sam Fox School a space to voice their experiences in a safe and proactive way. The survey is anonymous. Your comments are very important to this survey. **Please be aware that any written statements you choose to provide could be shared exactly as they are written, as long as they do not reveal your identity.** Please, do not share specific information that could reveal your identity.

This survey is not an official channel to report bias or sexual assault. If you have become a victim of either, we strongly encourage you to contact Sexual Assault Response Team.

Please specify: UNDERGRADUATE GRADUATE FACULTY GENDER: _____
YEAR IN SCHOOL: _____ IDENTIFY AS A MINORITY

1 During your time at Sam Fox school, have you experienced or witnessed an insult or threat based on social identity (e.g., sex, race, national origin, sexual orientation, socioeconomic background, or values)? Please check all that apply:

Experienced or witnessed an incident of bias based on...	Experienced yourself?	Witnessed someone else?	Have not experienced / witnessed
RACE / ETHNICITY	<input type="checkbox"/>	<input type="checkbox"/>	<input type="checkbox"/>
ABILITY STATUS / MEDICAL HEALTH	<input type="checkbox"/>	<input type="checkbox"/>	<input type="checkbox"/>
GENDER IDENTITY	<input type="checkbox"/>	<input type="checkbox"/>	<input type="checkbox"/>
NATIONAL ORIGIN / INTERNATIONAL STUDENT STATUS	<input type="checkbox"/>	<input type="checkbox"/>	<input type="checkbox"/>
SOCIOECONOMIC BACKGROUND	<input type="checkbox"/>	<input type="checkbox"/>	<input type="checkbox"/>
RELIGIOUS BELIEFS	<input type="checkbox"/>	<input type="checkbox"/>	<input type="checkbox"/>
POLITICAL BELIEFS	<input type="checkbox"/>	<input type="checkbox"/>	<input type="checkbox"/>
SEXUAL ORIENTATION	<input type="checkbox"/>	<input type="checkbox"/>	<input type="checkbox"/>
AGE	<input type="checkbox"/>	<input type="checkbox"/>	<input type="checkbox"/>

2 The incident(s) took place in the following setting(s):

- Sam Fox class
- Sam Fox studio
- Sam Fox social event
- Off-campus, Sam Fox related
- In review
- Visiting lecture
- Sam Fox international location
- Non-Sam Fox class or social event
- _____

3 The source(s) of bias has/have been:

- Faculty
- Staff
- Student(s)
- Visitor
- Reading / Syllabus
- Assignment
- _____

4 How frequently do you think you experience or witness an incident of bias based on social identity (e.g., sex, race, national origin, sexual orientation, or values)?

Never Rarely Sometimes Often Very Often

ii

Your comments are very important to this survey. Please be aware that any written statements you choose to provide could be shared exactly as they are written, as long as they do not reveal your identity. Please do not share specific information that could compromise your anonymity.

1 If you feel comfortable, please describe an instance (or instances) where you experienced or witnessed bias or discrimination within the Sam Fox School, and how it affected you.

2 If you feel comfortable, please describe an instance (or instances) where someone took action to address bias or discrimination within the Sam Fox School.

3 If you feel comfortable, please describe what resources you have used in instances of bias and discrimination (or resources you know are available to you) and your experiences using them.

Thank you.

